

**Oracle® Retail Integration Bus**

Hospital Administration Guide

Release 16.0

**E78847-01**

December 2016

This software and related documentation are provided under a license agreement containing restrictions on use and disclosure and are protected by intellectual property laws. Except as expressly permitted in your license agreement or allowed by law, you may not use, copy, reproduce, translate, broadcast, modify, license, transmit, distribute, exhibit, perform, publish, or display any part, in any form, or by any means. Reverse engineering, disassembly, or decompilation of this software, unless required by law for interoperability, is prohibited.

The information contained herein is subject to change without notice and is not warranted to be error-free. If you find any errors, please report them to us in writing.

If this is software or related documentation that is delivered to the U.S. Government or anyone licensing it on behalf of the U.S. Government, then the following notice is applicable:

U.S. GOVERNMENT END USERS: Oracle programs, including any operating system, integrated software, any programs installed on the hardware, and/or documentation, delivered to U.S. Government end users are "commercial computer software" pursuant to the applicable Federal Acquisition Regulation and agency-specific supplemental regulations. As such, use, duplication, disclosure, modification, and adaptation of the programs, including any operating system, integrated software, any programs installed on the hardware, and/or documentation, shall be subject to license terms and license restrictions applicable to the programs. No other rights are granted to the U.S. Government.

This software or hardware is developed for general use in a variety of information management applications. It is not developed or intended for use in any inherently dangerous applications, including applications that may create a risk of personal injury. If you use this software or hardware in dangerous applications, then you shall be responsible to take all appropriate fail-safe, backup, redundancy, and other measures to ensure its safe use. Oracle Corporation and its affiliates disclaim any liability for any damages caused by use of this software or hardware in dangerous applications.

Oracle and Java are registered trademarks of Oracle and/or its affiliates. Other names may be trademarks of their respective owners.

Intel and Intel Xeon are trademarks or registered trademarks of Intel Corporation. All SPARC trademarks are used under license and are trademarks or registered trademarks of SPARC International, Inc. AMD, Opteron, the AMD logo, and the AMD Opteron logo are trademarks or registered trademarks of Advanced Micro Devices. UNIX is a registered trademark of The Open Group.

This software or hardware and documentation may provide access to or information about content, products, and services from third parties. Oracle Corporation and its affiliates are not responsible for and expressly disclaim all warranties of any kind with respect to third-party content, products, and services unless otherwise set forth in an applicable agreement between you and Oracle. Oracle Corporation and its affiliates will not be responsible for any loss, costs, or damages incurred due to your access to or use of third-party content, products, or services, except as set forth in an applicable agreement between you and Oracle.

### **Value-Added Reseller (VAR) Language**

#### **Oracle Retail VAR Applications**

The following restrictions and provisions only apply to the programs referred to in this section and licensed to you. You acknowledge that the programs may contain third party software (VAR applications) licensed to Oracle. Depending upon your product and its version number, the VAR applications may include:

- (i) the **MicroStrategy** Components developed and licensed by MicroStrategy Services Corporation (MicroStrategy) of McLean, Virginia to Oracle and imbedded in the MicroStrategy for Oracle Retail Data Warehouse and MicroStrategy for Oracle Retail Planning & Optimization applications.
- (ii) the **Wavelink** component developed and licensed by Wavelink Corporation (Wavelink) of Kirkland, Washington, to Oracle and imbedded in Oracle Retail Mobile Store Inventory Management.
- (iii) the software component known as **Access Via**<sup>™</sup> licensed by Access Via of Seattle, Washington, and imbedded in Oracle Retail Signs and Oracle Retail Labels and Tags.
- (iv) the software component known as **Adobe Flex**<sup>™</sup> licensed by Adobe Systems Incorporated of San Jose, California, and imbedded in Oracle Retail Promotion Planning & Optimization application.

You acknowledge and confirm that Oracle grants you use of only the object code of the VAR Applications. Oracle will not deliver source code to the VAR Applications to you. Notwithstanding any other term or condition of the agreement and this ordering document, you shall not cause or permit alteration of any VAR

Applications. For purposes of this section, "alteration" refers to all alterations, translations, upgrades, enhancements, customizations or modifications of all or any portion of the VAR Applications including all reconfigurations, reassembly or reverse assembly, re-engineering or reverse engineering and recompilations or reverse compilations of the VAR Applications or any derivatives of the VAR Applications. You acknowledge that it shall be a breach of the agreement to utilize the relationship, and/or confidential information of the VAR Applications for purposes of competitive discovery.

The VAR Applications contain trade secrets of Oracle and Oracle's licensors and Customer shall not attempt, cause, or permit the alteration, decompilation, reverse engineering, disassembly or other reduction of the VAR Applications to a human perceivable form. Oracle reserves the right to replace, with functional equivalent software, any of the VAR Applications in future releases of the applicable program.



---

---

# Contents

<b>Send Us Your Comments</b> .....	vii
<b>Preface</b> .....	ix
Audience .....	ix
Documentation Accessibility .....	ix
Related Documents .....	ix
Customer Support .....	x
Review Patch Documentation .....	x
Improved Process for Oracle Retail Documentation Corrections .....	x
Oracle Retail Documentation on the Oracle Technology Network .....	xi
Conventions .....	xi
<b>1 Introduction</b>	
<b>2 Installation and Setup</b>	
<b>Installation and Setup Instructions</b> .....	2-1
Installation Prerequisite .....	2-1
Prepare the WebLogic Server .....	2-1
Creating Required RCU Schema Using the Repository Creation Utility .....	2-7
Creating a WebLogic Domain with JRF .....	2-11
Verify Installation of ADF Runtime Libraries .....	2-21
Extending an Existing Domain to Add ADF Run-time Libraries .....	2-22
Deploying RIHA ear File from RIB-HOME .....	2-32
Testing the Deployment .....	2-33
<b>3 Navigation and Help</b>	
<b>Log in to RIHA</b> .....	3-1
<b>Search for a Hospital Record</b> .....	3-2
Basic Search .....	3-2
Advanced Search .....	3-3
<b>Delete a Message</b> .....	3-3
<b>Stop a Message</b> .....	3-4
<b>Retry a Message</b> .....	3-4
<b>View and Edit a Message</b> .....	3-4
<b>Save a Message Locally</b> .....	3-5

<b>Import a New Hospital Record to Hospital Tables.....</b>	<b>3-5</b>
<b>Update an Existing Hospital Record.....</b>	<b>3-6</b>
<b>View Hospital Record Details.....</b>	<b>3-6</b>
<b>View the Error History of a Message.....</b>	<b>3-7</b>
<b>View the Hospital Reference Information of a Message.....</b>	<b>3-8</b>
<b>View the Routing Information of a Message.....</b>	<b>3-9</b>

## **Glossary**

---

---

## Send Us Your Comments

Oracle® Retail Integration Bus Hospital Administration Guide, Release 16.0.

Oracle welcomes customers' comments and suggestions on the quality and usefulness of this document.

Your feedback is important, and helps us to best meet your needs as a user of our products. For example:

- Are the implementation steps correct and complete?
- Did you understand the context of the procedures?
- Did you find any errors in the information?
- Does the structure of the information help you with your tasks?
- Do you need different information or graphics? If so, where, and in what format?
- Are the examples correct? Do you need more examples?

If you find any errors or have any other suggestions for improvement, then please tell us your name, the name of the company who has licensed our products, the title and part number of the documentation and the chapter, section, and page number (if available).

---

---

**Note:** Before sending us your comments, you might like to check that you have the latest version of the document and if any concerns are already addressed. To do this, access the Online Documentation available on the Oracle Technology Network Web site. It contains the most current Documentation Library plus all documents revised or released recently.

---

---

Send your comments to us using the electronic mail address: [retail-doc\\_us@oracle.com](mailto:retail-doc_us@oracle.com)

Please give your name, address, electronic mail address, and telephone number (optional).

If you need assistance with Oracle software, then please contact your support representative or Oracle Support Services.

If you require training or instruction in using Oracle software, then please contact your Oracle local office and inquire about our Oracle University offerings. A list of Oracle offices is available on our Web site at <http://www.oracle.com>.





---

---

# Preface

The Oracle Retail Integration Bus Hospital Administration Guide describes the application user interface and how to navigate through it.

## Audience

This document is intended for the users and administrators of Oracle RIB Hospital Administration. This may include merchandisers, buyers, and business analysts.

## Documentation Accessibility

For information about Oracle's commitment to accessibility, visit the Oracle Accessibility Program website at

<http://www.oracle.com/pls/topic/lookup?ctx=acc&id=docacc>.

### Access to Oracle Support

Oracle customers that have purchased support have access to electronic support through My Oracle Support. For information, visit

<http://www.oracle.com/pls/topic/lookup?ctx=acc&id=info> or visit

<http://www.oracle.com/pls/topic/lookup?ctx=acc&id=trs> if you are hearing impaired.

## Related Documents

For more information, see the following documents in the Oracle Retail Integration Bus documentation set:

- *Oracle Retail Integration Bus Implementation Guide*
- *Oracle Retail Integration Bus Installation Guide*
- *Oracle Retail Integration Bus Operations Guide*
- *Oracle Retail Integration Bus Release Notes*
- *Oracle Retail Integration Bus Security Guide*
- *Oracle Retail Integration Bus Support Tools Guide*
- *Oracle Retail Integration Bus Integration Guide*
- *Oracle Retail Integration Bus Java Messaging Service (JMS) Console Guide*
- *Oracle Retail Functional Artifacts Guide*
- *Oracle Retail Service-Oriented Architecture Enabler Tool Guide*

- *Oracle Retail Integration Bus Data Model*
- *Oracle Retail Payload Mapper Guide*

## Customer Support

To contact Oracle Customer Support, access My Oracle Support at the following URL:

<https://support.oracle.com>

When contacting Customer Support, please provide the following:

- Product version and program/module name
- Functional and technical description of the problem (include business impact)
- Detailed step-by-step instructions to re-create
- Exact error message received
- Screen shots of each step you take

## Review Patch Documentation

When you install the application for the first time, you install either a base release (for example, 16.0) or a later patch release (for example, 16.0.1). If you are installing the base release, additional patch, and bundled hot fix releases, read the documentation for all releases that have occurred since the base release before you begin installation. Documentation for patch and bundled hot fix releases can contain critical information related to the base release, as well as information about code changes since the base release.

## Improved Process for Oracle Retail Documentation Corrections

To more quickly address critical corrections to Oracle Retail documentation content, Oracle Retail documentation may be republished whenever a critical correction is needed. For critical corrections, the republication of an Oracle Retail document may at times not be attached to a numbered software release; instead, the Oracle Retail document will simply be replaced on the Oracle Technology Network Web site, or, in the case of Data Models, to the applicable My Oracle Support Documentation container where they reside.

This process will prevent delays in making critical corrections available to customers. For the customer, it means that before you begin installation, you must verify that you have the most recent version of the Oracle Retail documentation set. Oracle Retail documentation is available on the Oracle Technology Network at the following URL:

<http://www.oracle.com/technetwork/documentation/oracle-retail-100266.html>

An updated version of the applicable Oracle Retail document is indicated by Oracle part number, as well as print date (month and year). An updated version uses the same part number, with a higher-numbered suffix. For example, part number E123456-02 is an updated version of a document with part number E123456-01.

If a more recent version of a document is available, that version supersedes all previous versions.

# Oracle Retail Documentation on the Oracle Technology Network

Oracle Retail product documentation is available on the following web site:

<http://www.oracle.com/technetwork/documentation/oracle-retail-100266.html>

(Data Model documents are not available through Oracle Technology Network. You can obtain them through My Oracle Support.)

## Conventions

The following text conventions are used in this document:

<b>Convention</b>	<b>Meaning</b>
<b>boldface</b>	Boldface type indicates graphical user interface elements associated with an action, or terms defined in text or the glossary.
<i>italic</i>	Italic type indicates book titles, emphasis, or placeholder variables for which you supply particular values.
monospace	Monospace type indicates commands within a paragraph, URLs, code in examples, text that appears on the screen, or text that you enter.



---

---

## Introduction

Oracle Retail Integration Bus Hospital Administration or RIB Hospital Administration (RIHA) is a tool to manage RIB messages in the RIB hospital error tables.

Using RIHA you can search for hospital records, stop a message from being retried, retry a message for which maximum system-set retries have been tried, and delete a message from the tables. You can insert new records into hospital tables. You can also update existing hospital records and message payloads.

RIHA should be installed only after core RIB components have been installed and verified.

Using RIHA is the recommended way to perform all RIB Hospital error table operations.



---

---

## Installation and Setup

The RIHA installation chapter widely focuses on ADF 12c runtime installation and deploying the tool's EAR file. For more information about domain creation and other server related information, see the WebLogic application server documents.

### Installation and Setup Instructions

This section describes the installation and setup instructions including the installation prerequisite, preparing the WebLogic server, creating a WebLogic domain, verifying installation of ADF runtime libraries, extending an existing domain to add ADF run-time libraries, and deploying the EAR file. It also describes the security setup guidelines.

---

---

**Note:** The screen captures included in the following procedures are for example only. Because these procedures must be followed for each application, valid values will vary. Therefore, consider the illustrations as guides only; the values shown may not always apply.

---

---

### Installation Prerequisite

The RIB Hospital Administration(RIHA) requires Oracle WebLogic Server 12c (12.2.1.0.0) and built with Java 8 (JDK 1.8.0+ 64 bit or later, with the latest security updates.

---

---

**Important:** If there is an existing WebLogic 12.x.x or 10.3.xc installation on the server, you must upgrade to WebLogic 12.2.1.0.0. All middleware components associated with WebLogic server 10.3.6 should be upgraded to 12.2.1.0.0

Back up the weblogic.policy file (\$WLS\_HOME/wlserver/server/lib) before upgrading your WebLogic server, because this file could be overwritten. Copy over the weblogic.policy backup file after the WebLogic upgrade is finished and the post patching installation steps are completed.

For upgrading your WebLogic server to 12.2.1.0.0 use the appropriate Upgrade Installer.

---

---

### Prepare the WebLogic Server

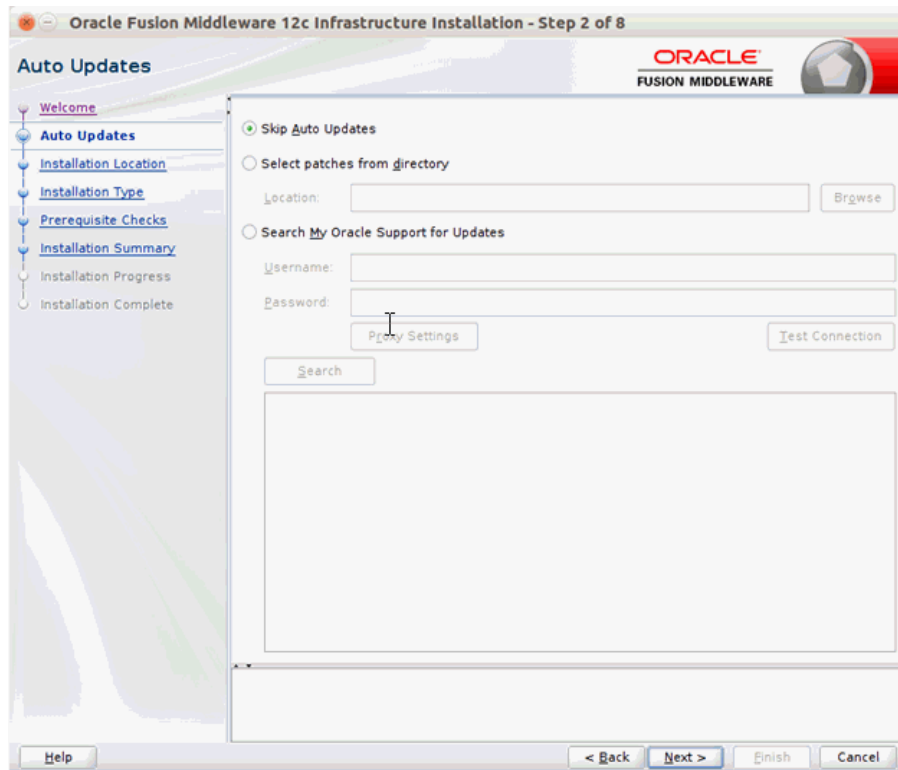
Take the following steps to prepare the WebLogic server:

1. Find `fmw_12.2.1.0.0_infrastructure_Disk1_1of1.zip` and download this file to your system.
2. Extract the contents of this zip file to your system. Use the `fmw_12.2.1.0.0_infrastructure.jar` file to run the installer.
3. Run the installer by executing the `java -jar fmw_12.2.1.0.0_infrastructure.jar` file. The Welcome window displays.

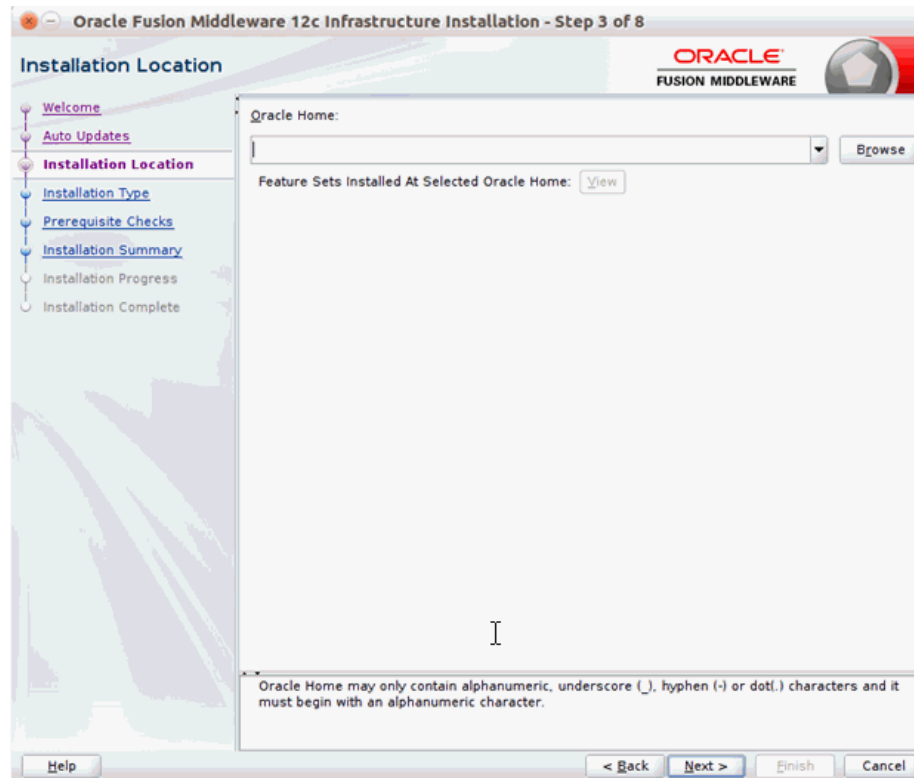


4. Click **Next**. The Auto Updates window displays.

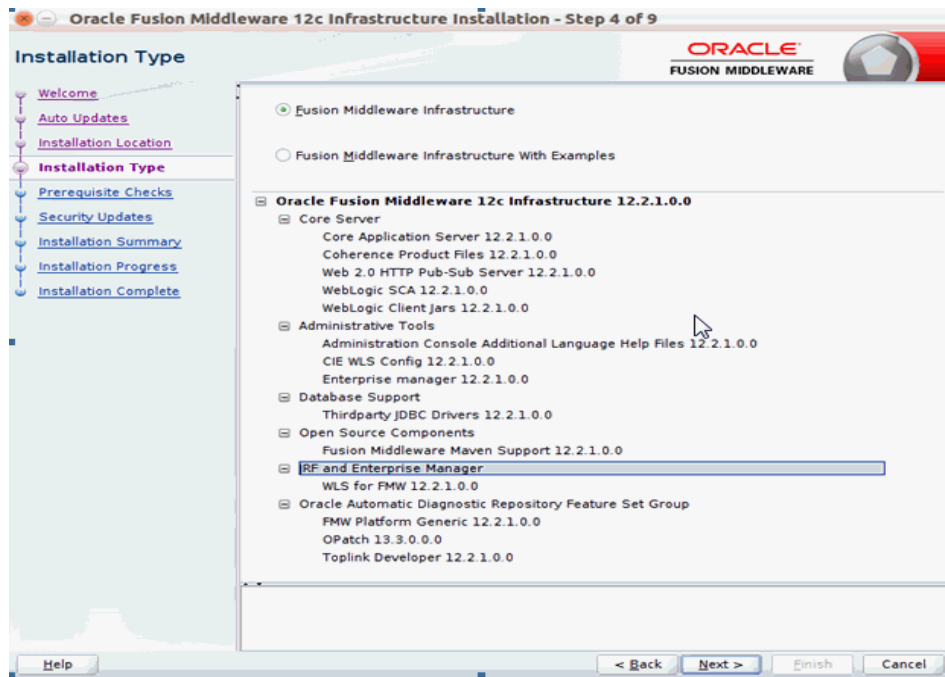




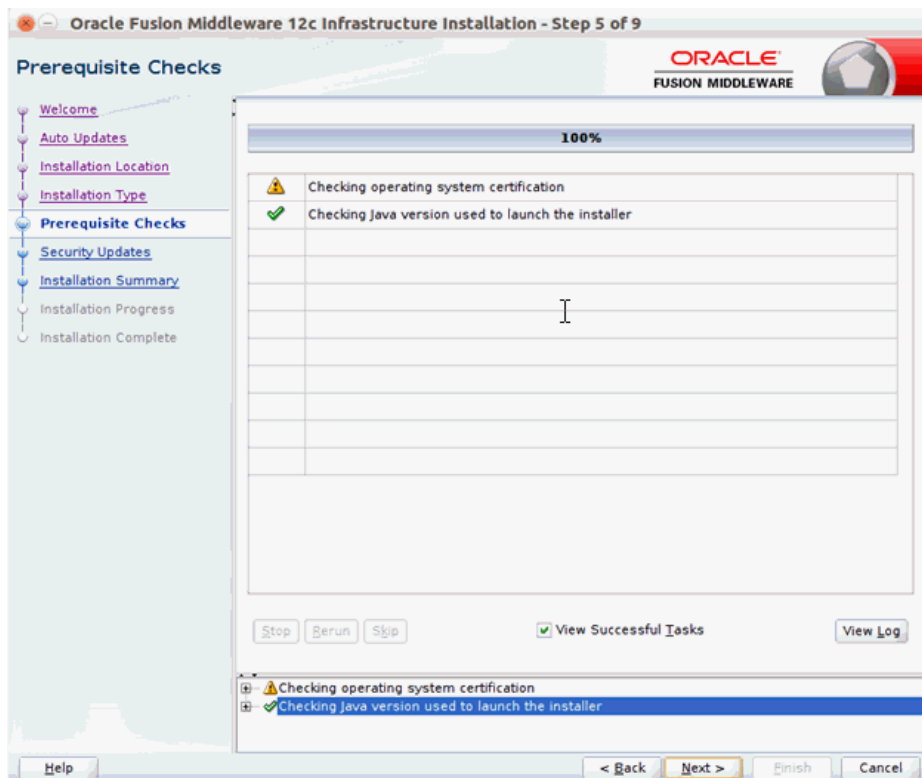
5. Select appropriate radio button and click Next. The Installation Location window displays.



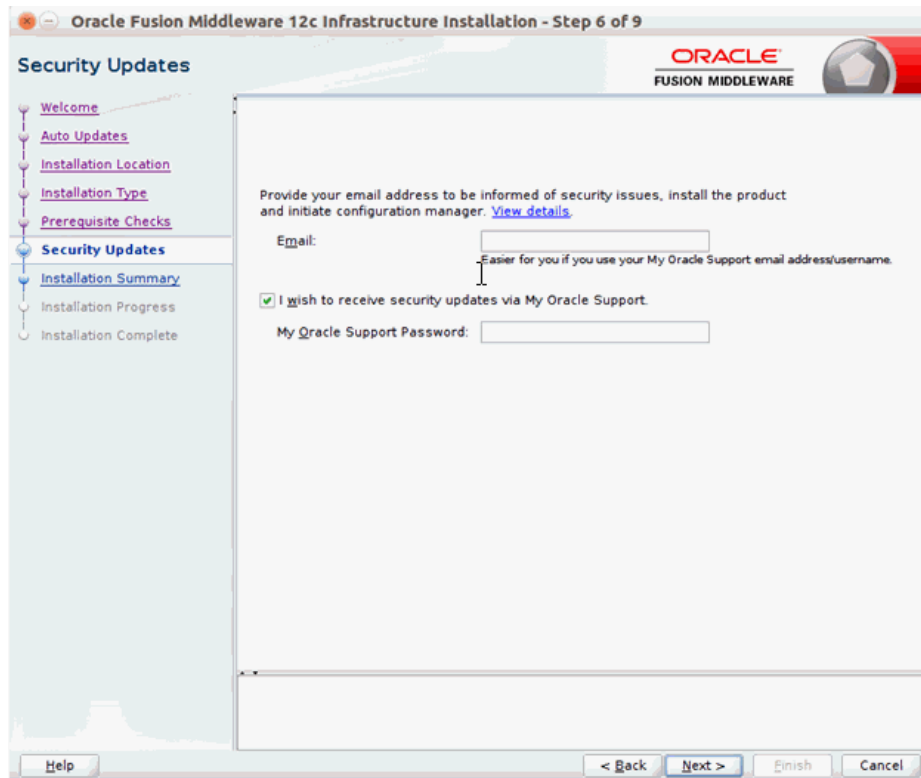
- Click **Browse** to select the Oracle Home location where the Weblogic server is to be installed. Click **Next**. The Installation Type window displays.



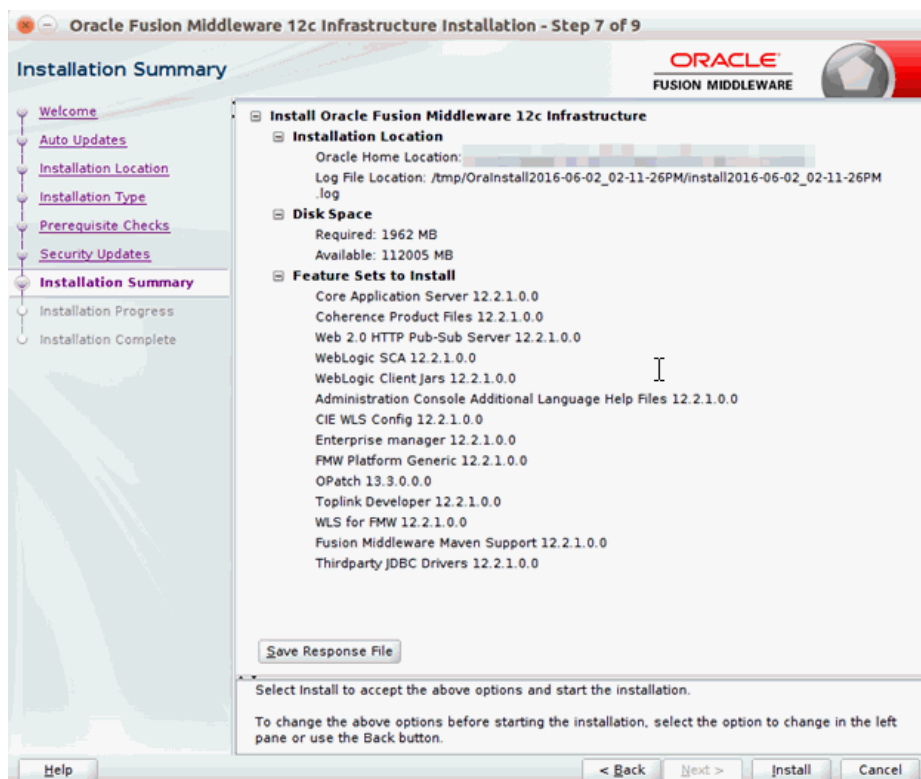
- Select Fusion Middleware Infrastructure and click **Next**. The installer performs the pre-requisite checks and ensures all required conditions are satisfied.



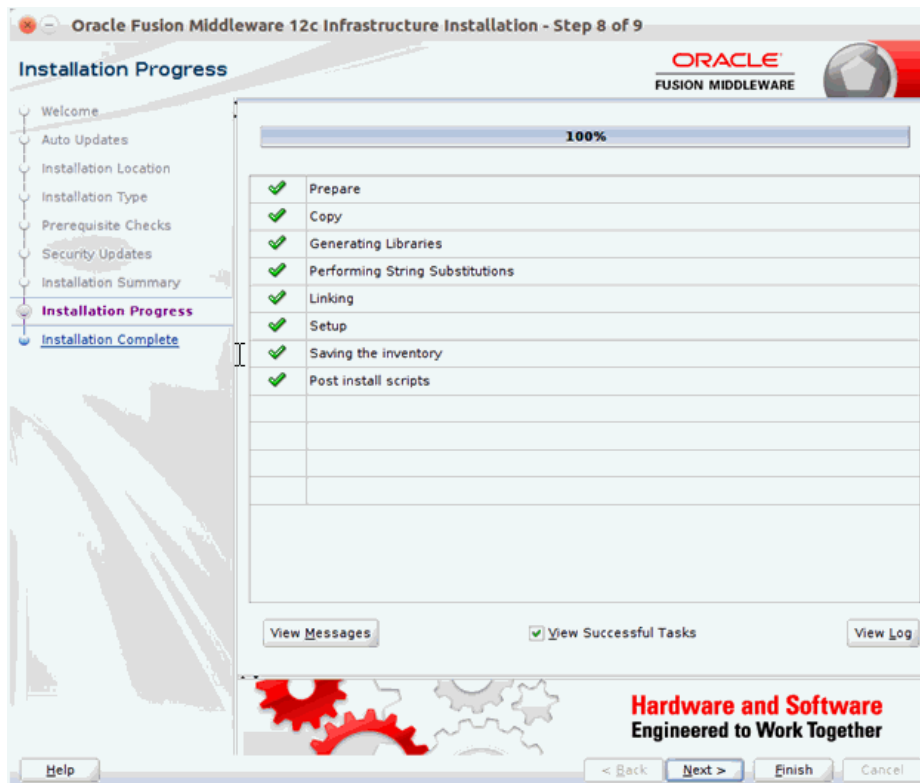
- When the pre-requisite check completes successfully, click **Next**. The Security Updates window displays.



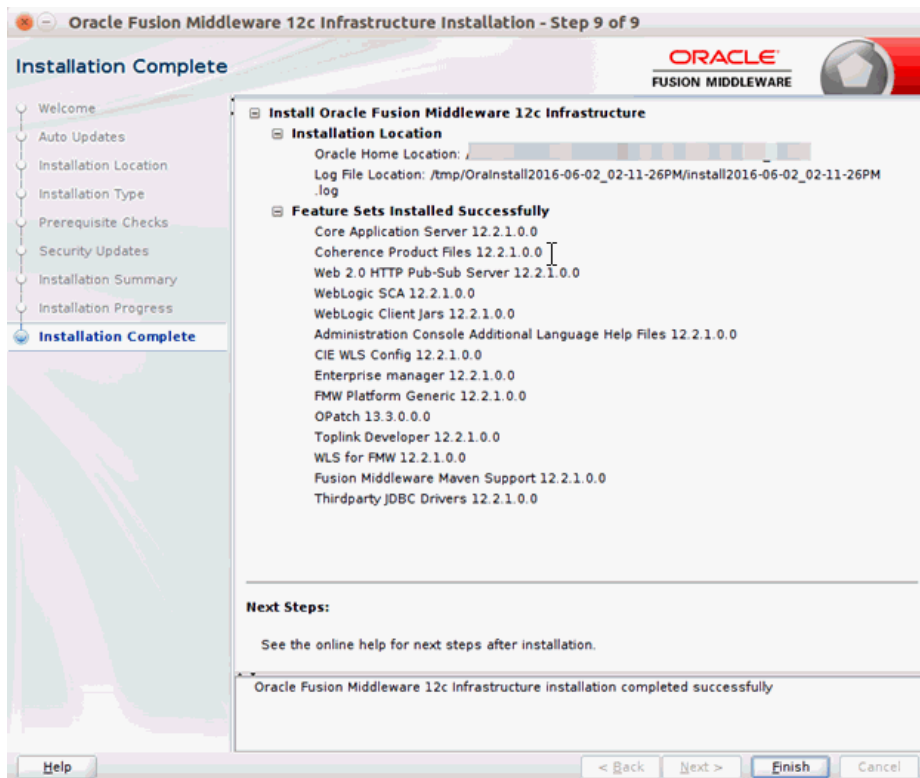
9. Provide the information and click **Next**. The Installation Summary window displays.



10. Click **Install**. The Installation Progress window displays.



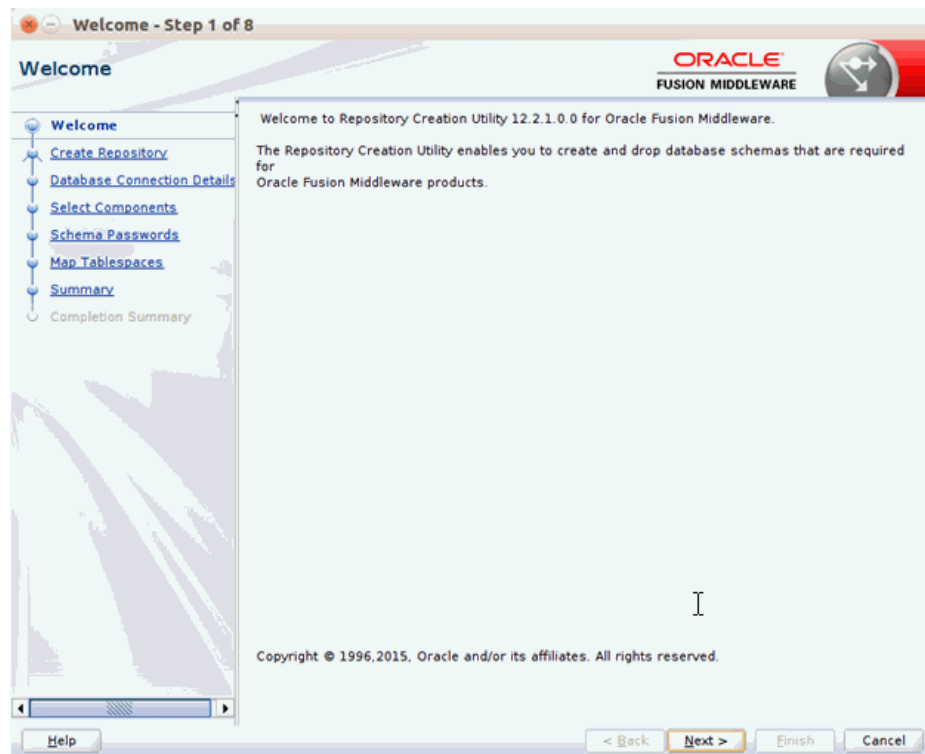
11. Click **Next** when the installation completes. The Installation Complete window displays.



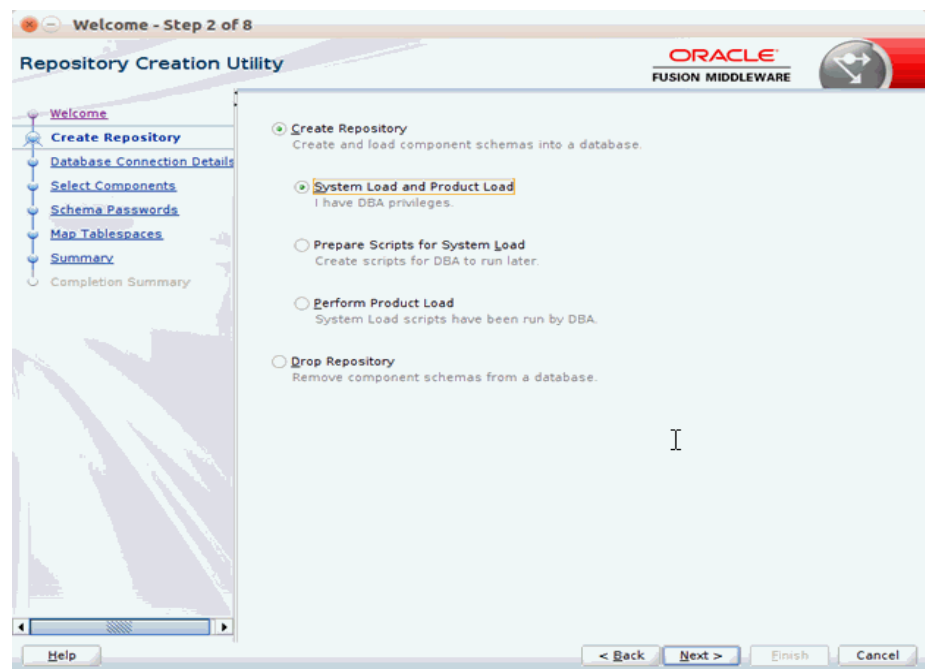
## Creating Required RCU Schema Using the Repository Creation Utility

To create a schema user for the domain, take the following steps:

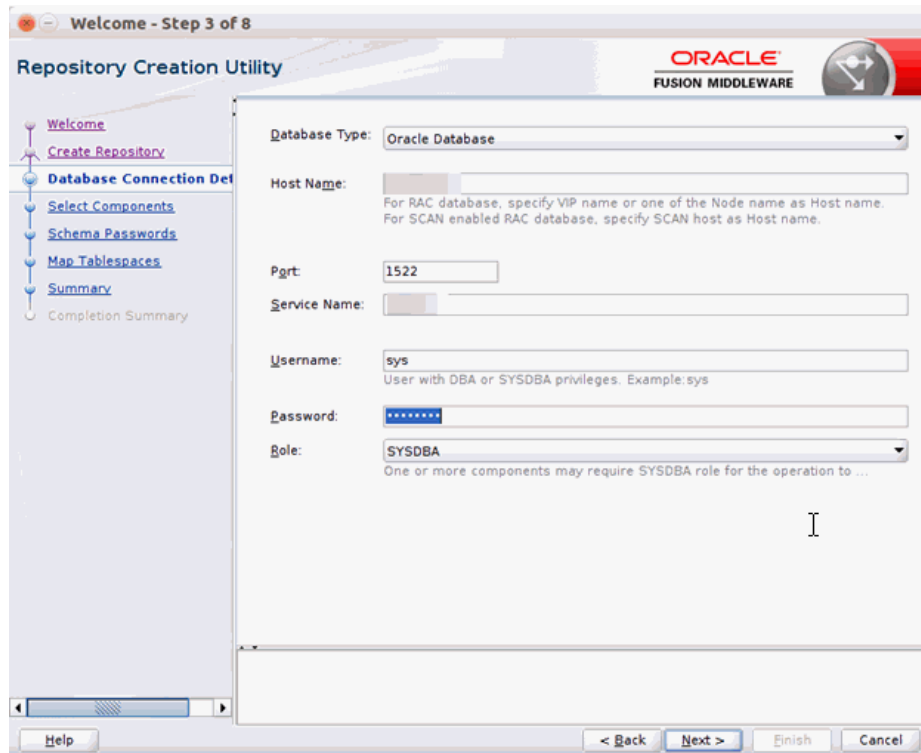
1. Run the RCU from the <MW\_HOME>/oracle\_common/bin folder. The Welcome window displays.



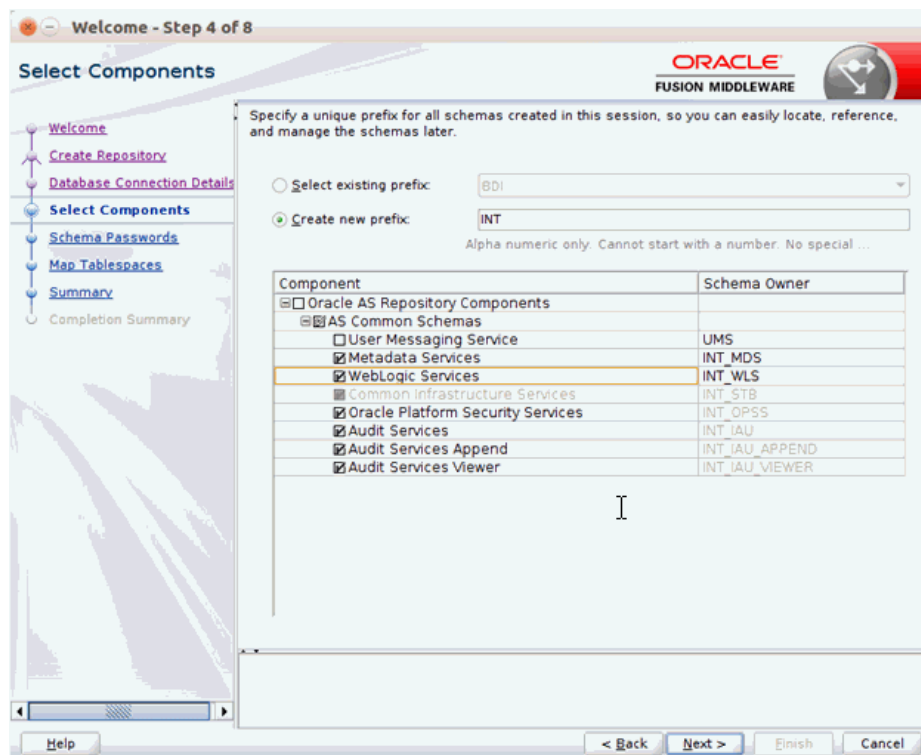
2. Click **Next** and select the Create Repository option.



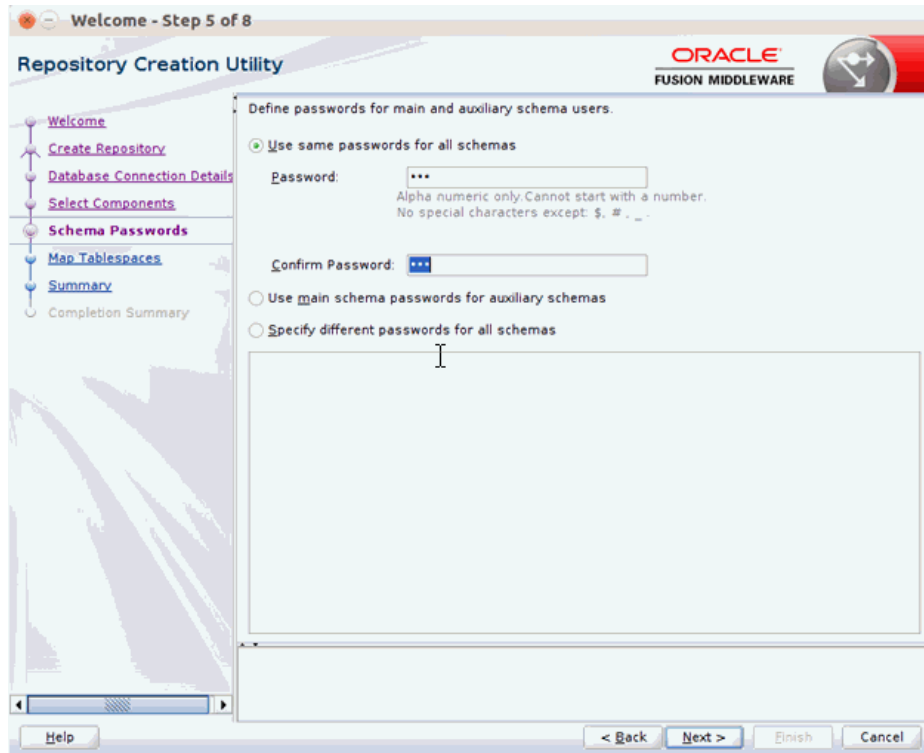
3. Click **Next**. Enter the database credentials where the schema user has to be created.



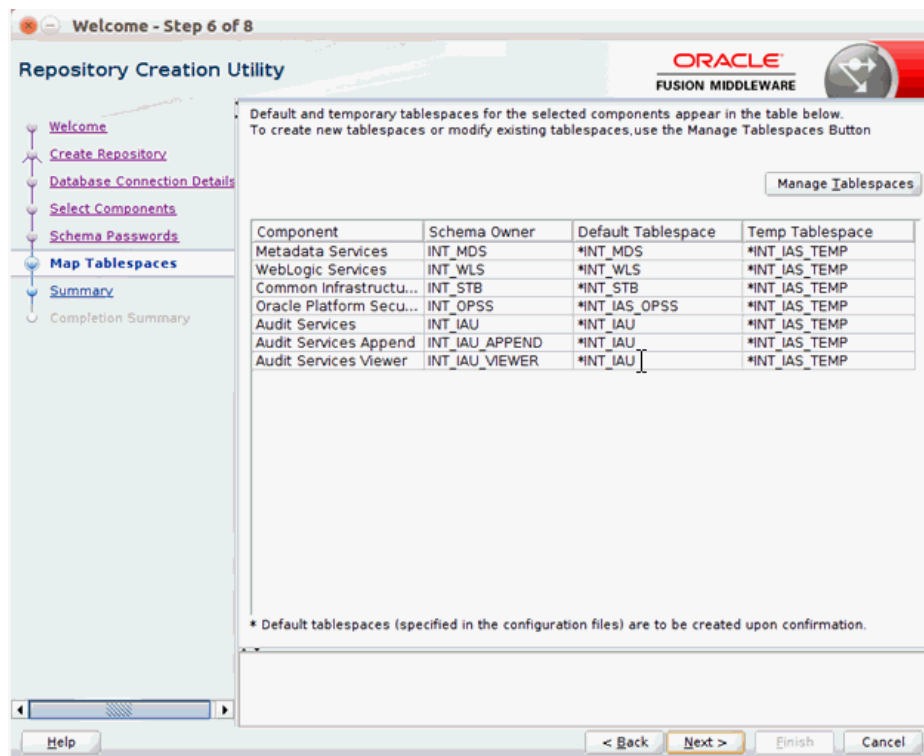
4. Click **Next**. Specify the prefix to be used for the schema user creation. For example, INT. Select Metadata Services, Weblogic Services, and Oracle Platform Security Services.



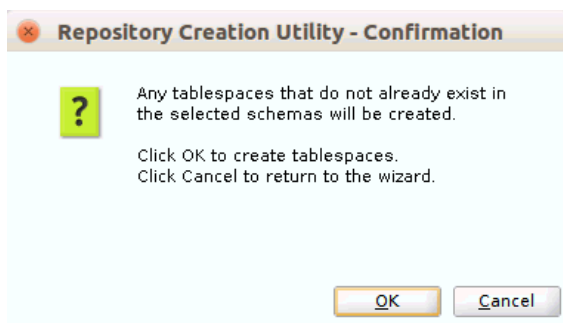
5. Click **Next**. Specify the password.



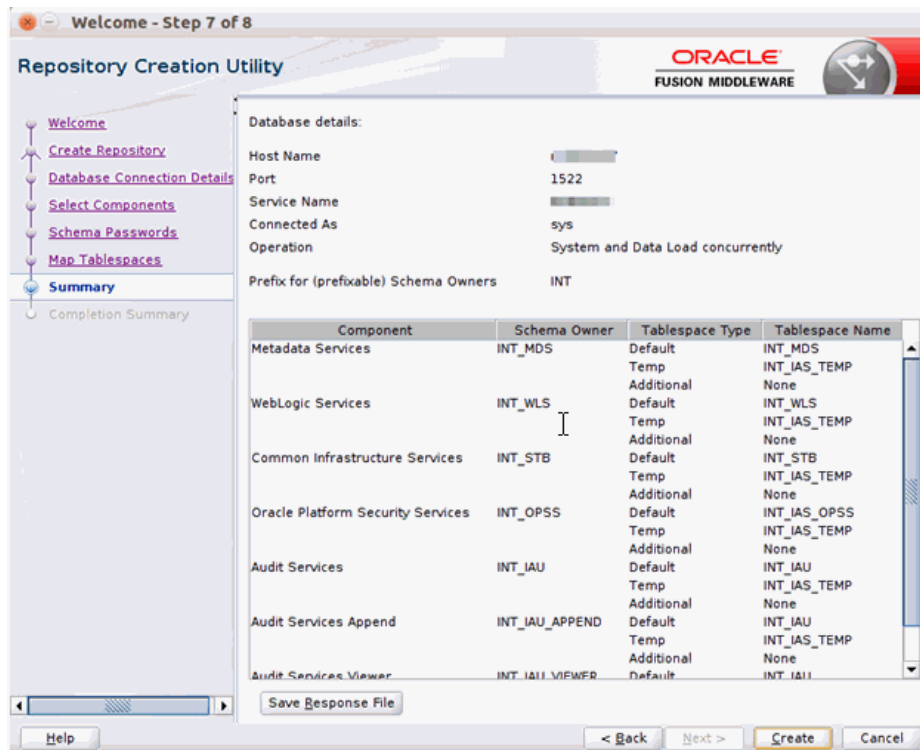
6. Click **Next**. The window provides the details of tablespaces created as part of schema creation.



7. Click **Next**. The Confirmation window displays.

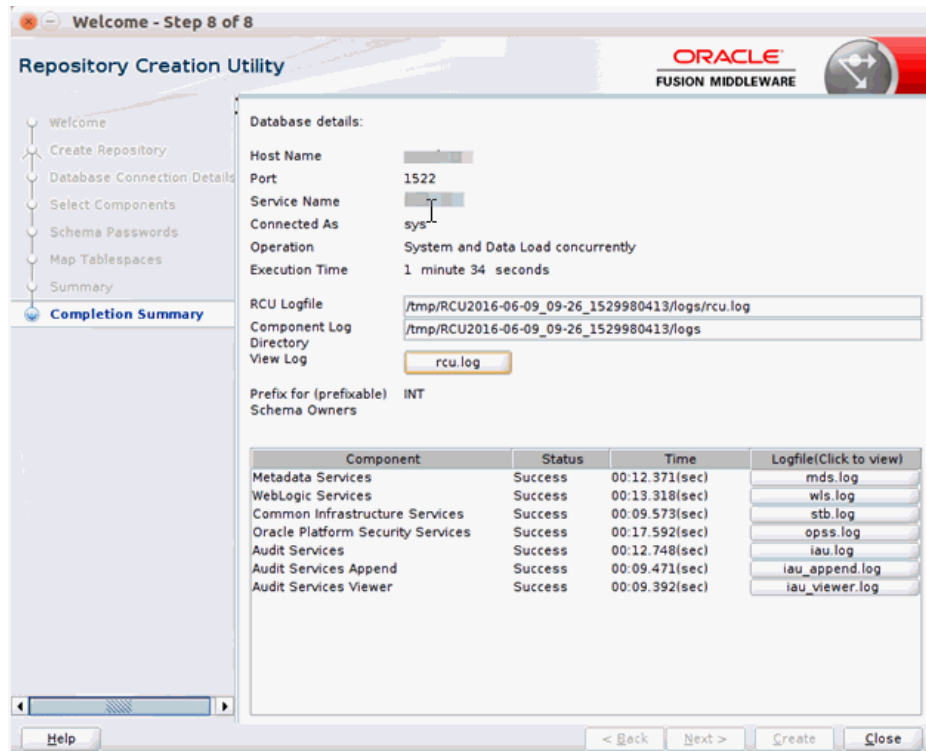


8. Click **OK**. The Summary window displays.



9. Click **Create** and proceed to create the schema. This could take a while to complete. The Completion Summary window displays.

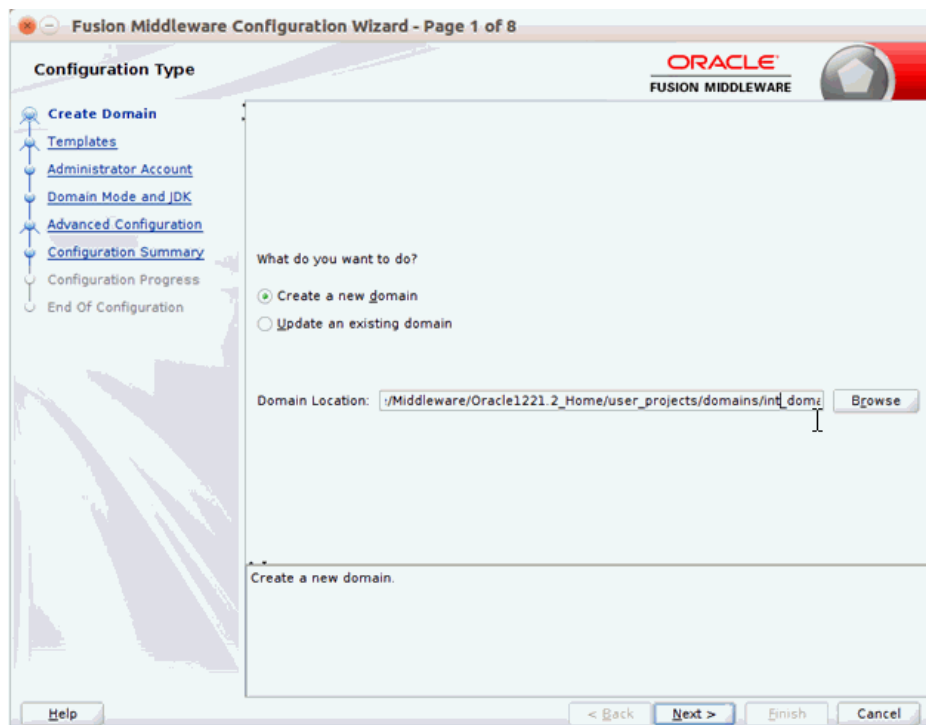




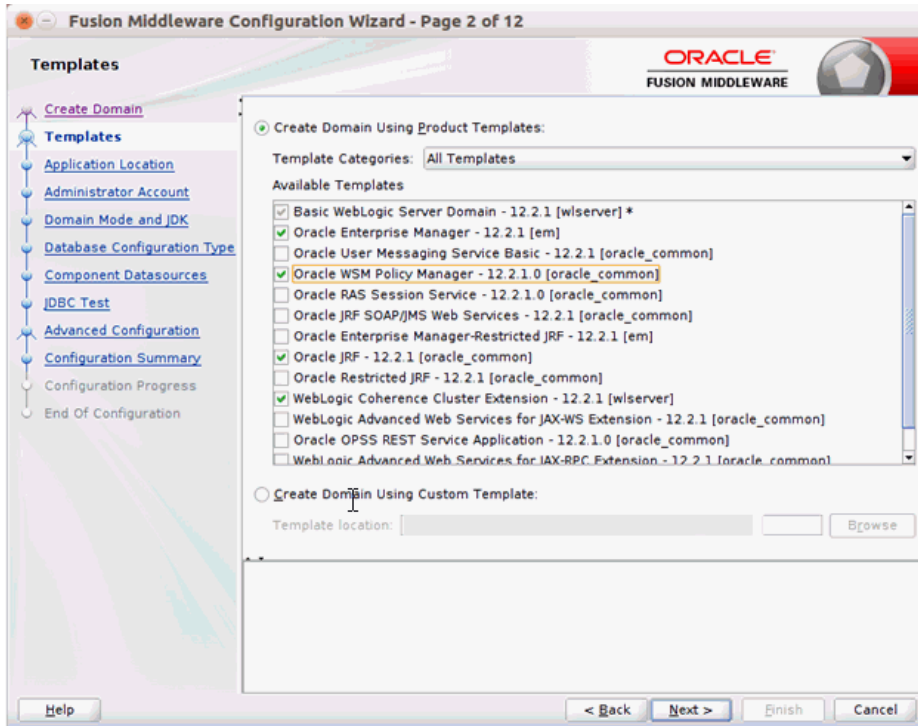
## Creating a WebLogic Domain with JRF

To create a new WebLogic domain with JRF, take the following steps:

1. Run the config.sh from <ORACLE\_HOME>/oracle\_common/common/bin folder. The Configuration Type window displays.



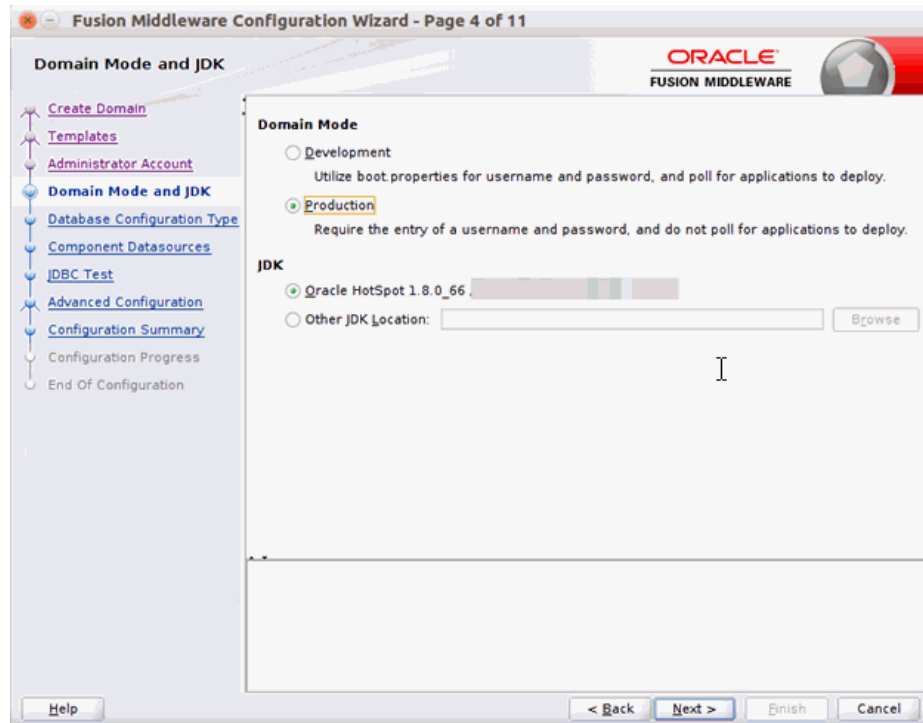
2. Select **Create a new domain**, provide domain location, and click **Next**. The Templates window displays. By default, the Basic WebLogic Server Domain - 12.2.1 [wlserver] checkbox is selected. Select the Oracle JRF - 12.2.1 [oracle\_common], Oracle Enterprise Manager [em], and Oracle WSM Policy Manager - 12.2.1.0 [oracle\_common] check boxes.



3. Click **Next**. The Administrator Account window displays. Enter the user credentials you want to use to log in to the WebLogic Administration Console.

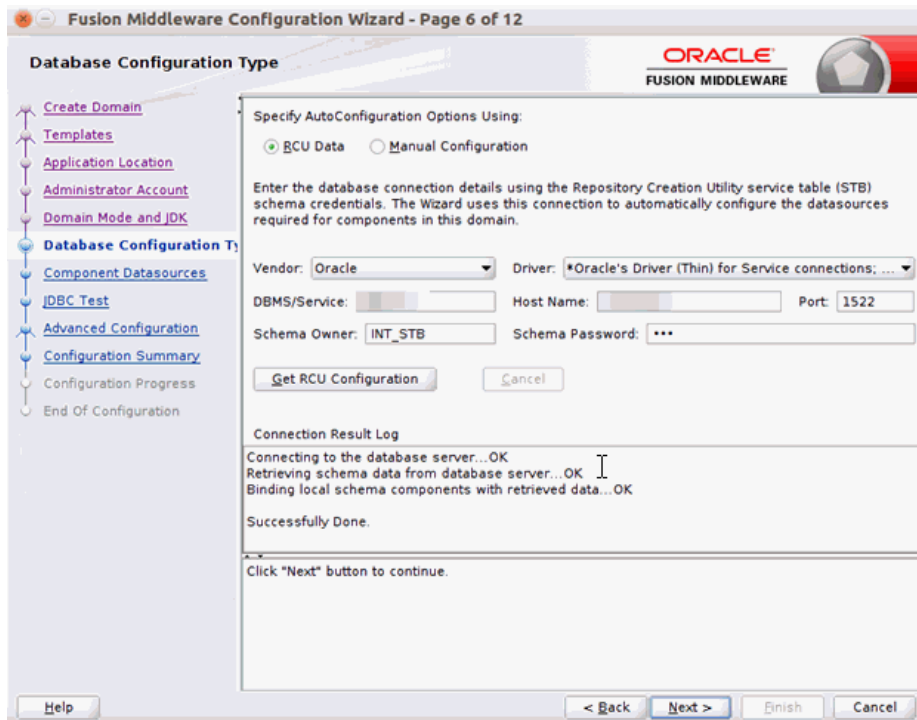


4. Click **Next**. The Domain Mode and JDK window displays. Set the Domain Mode as Production and select the JDK version (JDK 1.8 with the latest security updates) you want to use.

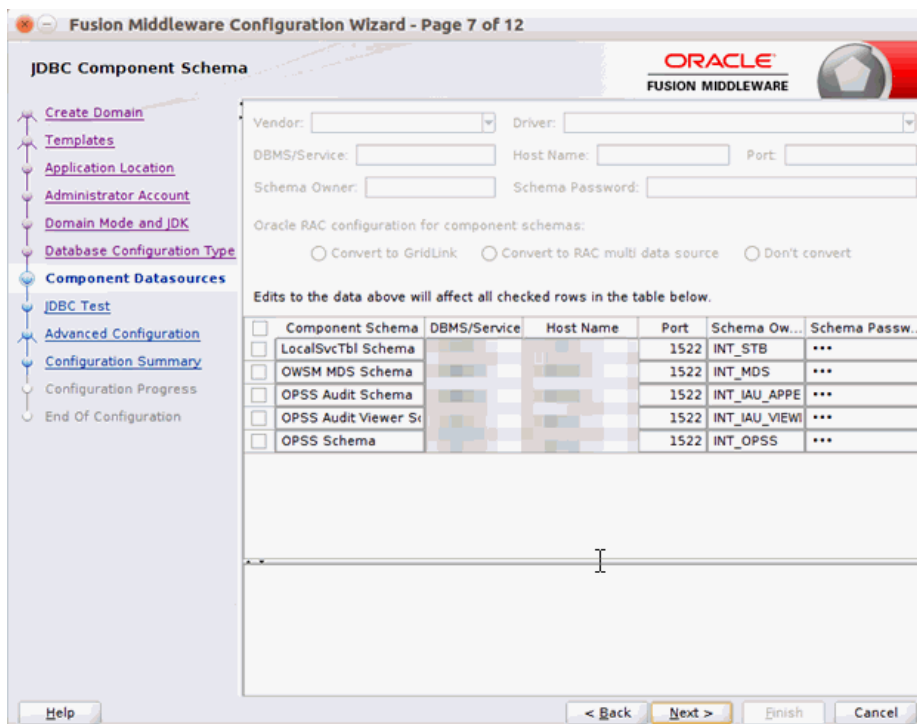


5. Click **Next**. The Database Configuration Type window displays.
  - a. Select RCU Data radio button.
  - b. Select Oracle as the Vendor.
  - c. Select Oracle's Driver (Thin) for Service connections; Version 9.0.1 and later as the Driver.
  - d. Enter the Service, Host Name, Port, Schema Owner, and Schema Password for \*\_STB schema created using RCU.
  - e. Click Get RCU Configuration.

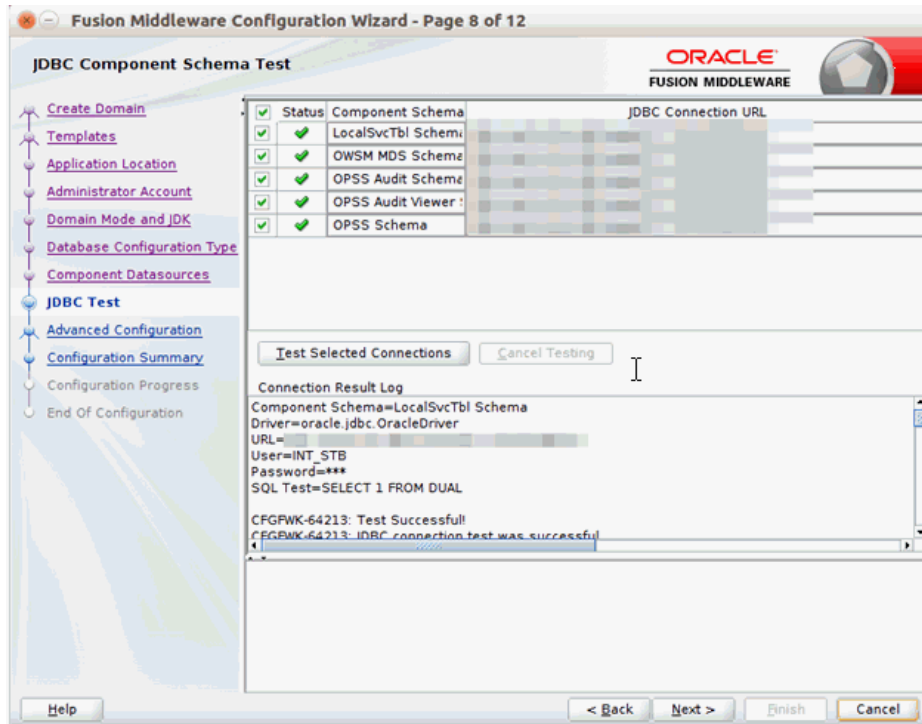
The Connection Result Log displays the connection status.



6. Click Next. The JDBC Component Schema window displays.



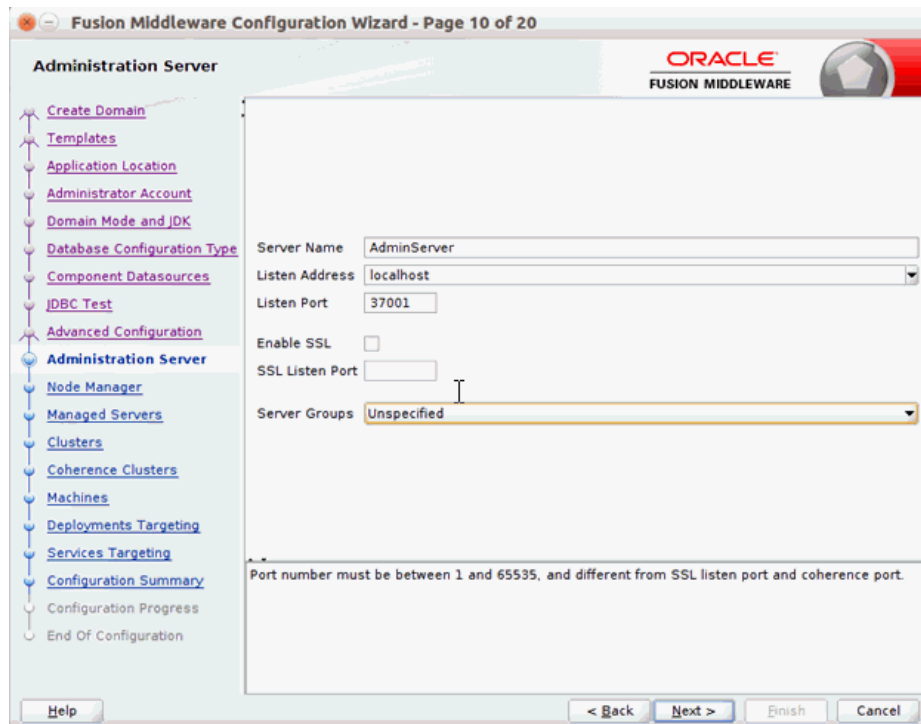
7. Click Next. The JDBC Component Schema Test window displays status on whether the JDBC tests on the schemas were successful.



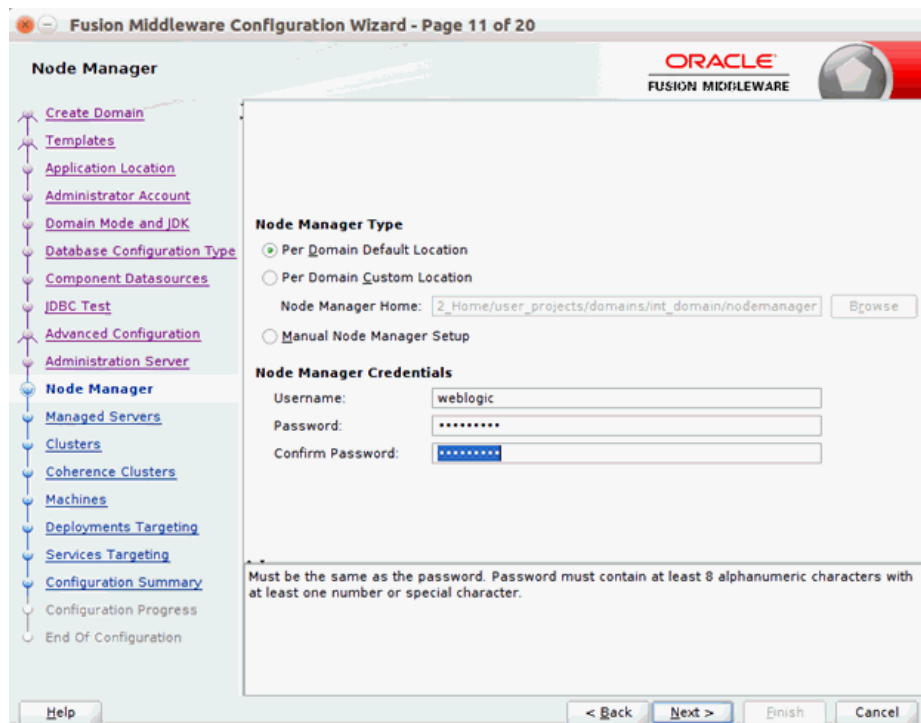
- Click **Next**. The Advanced Configuration window displays. Select all the checkboxes, except Domain Frontend Host Capture and JMS File Store options, in this window.



- Click **Next**. The Administration Server window displays. Enter the Listen Address and the Listen Port details.



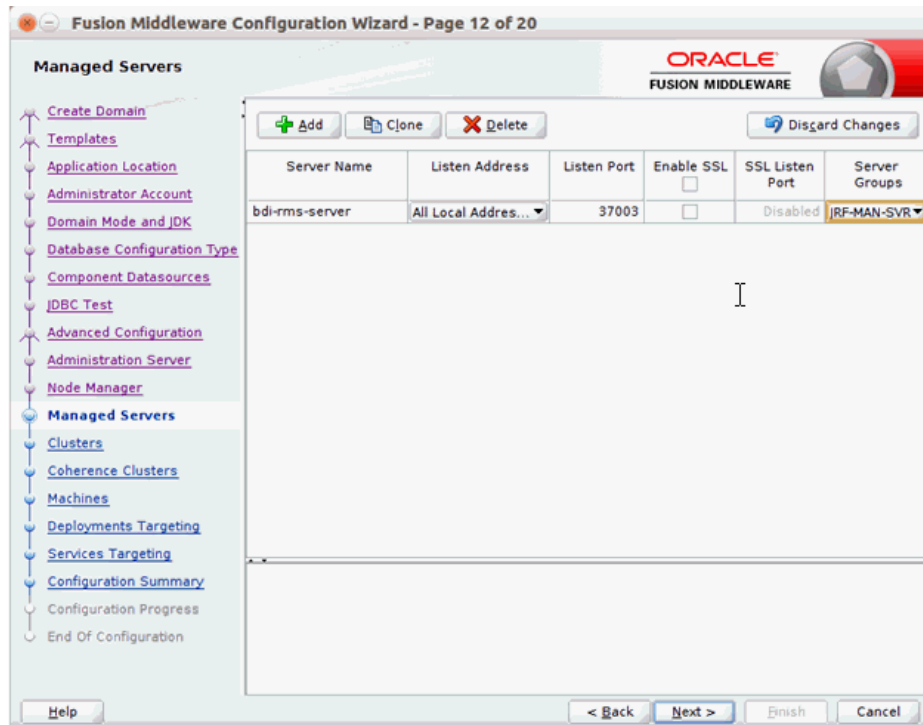
10. Click **Next**. The Node Manager window displays. Select the Node Manager Type and enter the Node Manager credentials.



11. Click **Next**. The Managed Servers window displays.

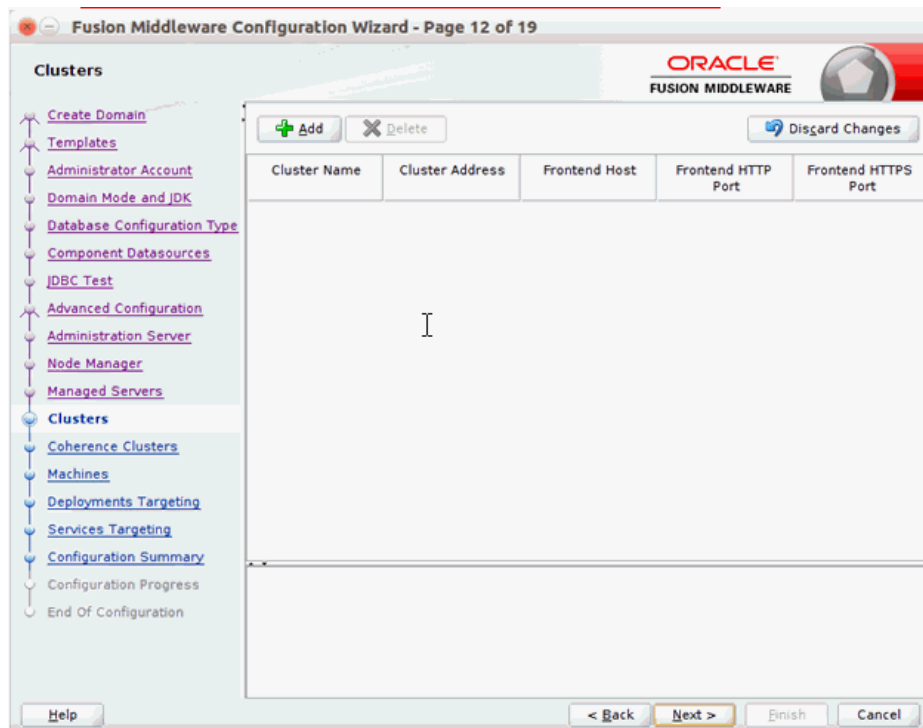
- a. Click **Add** to add a managed server on which you will deploy the application.
- b. Enter the **Server Name**, **Listen Address**, and **Listen Port** for the managed server.

- c. Set the Server Groups to JRF-MAN-SVR.



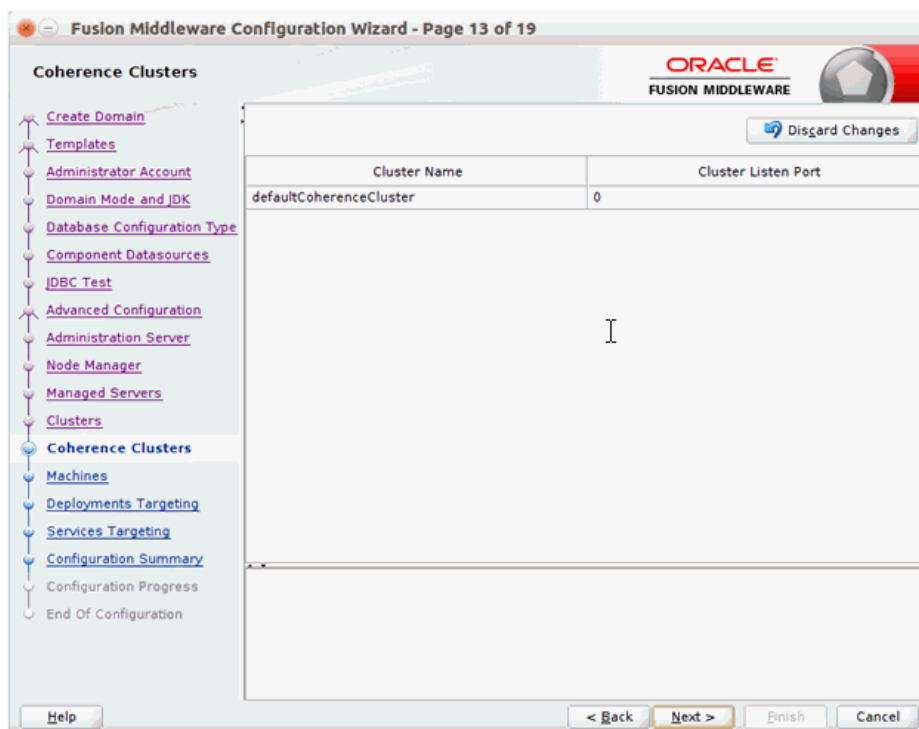
- 12. Click **Next**. The Clusters window displays.

- a. Click **Add** to add a cluster. This is an optional step in the procedure.

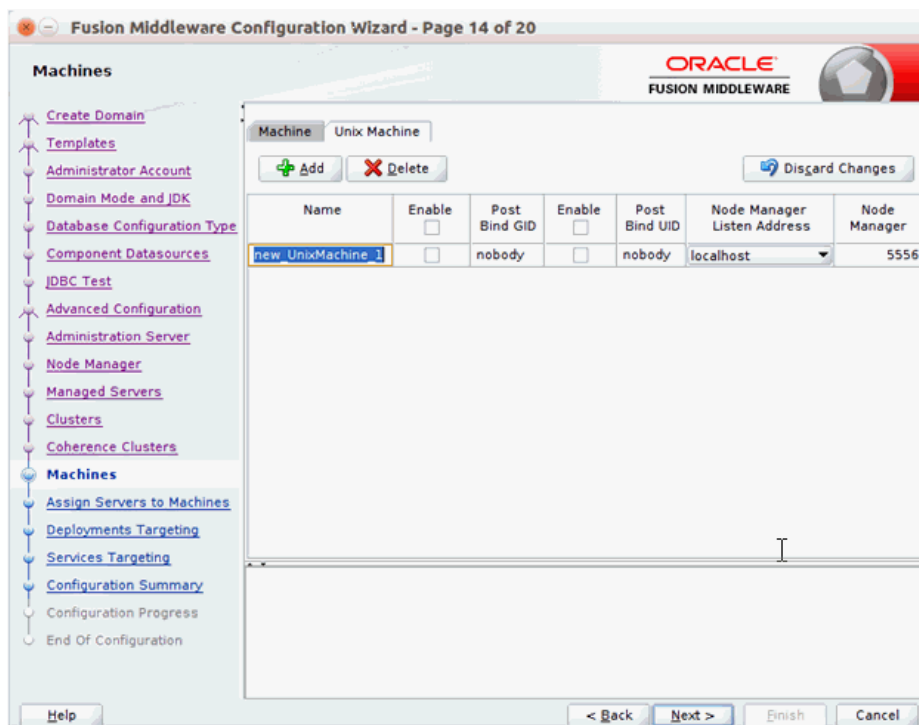


- 13. Click **Next**. The Coherence Clusters window displays.

- a. Add a coherence cluster. This is an optional step in the procedure.

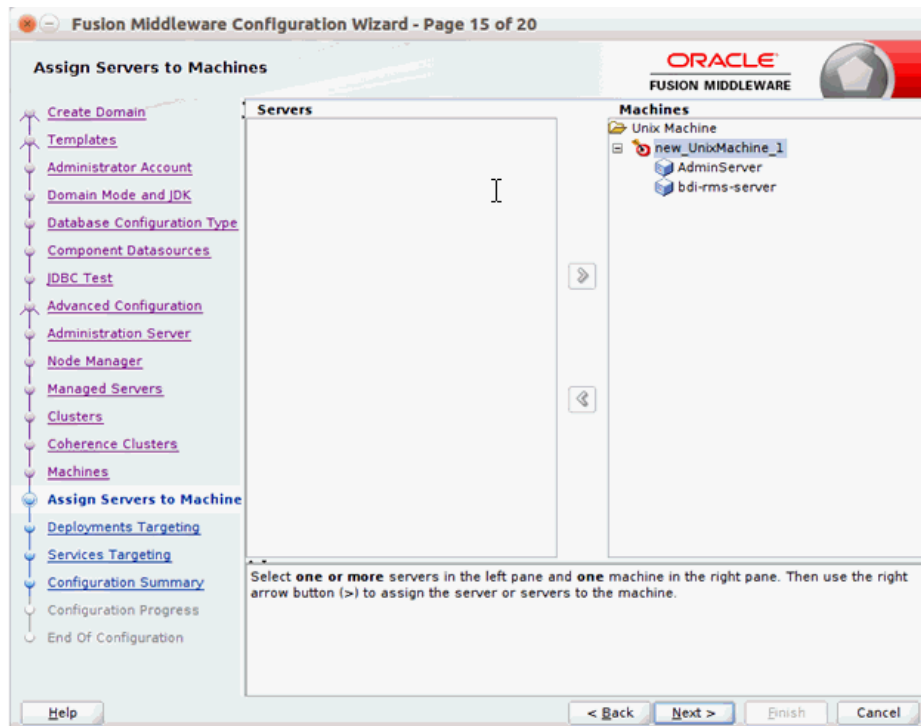


14. Click **Next**. The Machines window displays.
  - a. Click **Add**.
  - b. Enter the Name and the Node Manager Listen Address for the managed server.

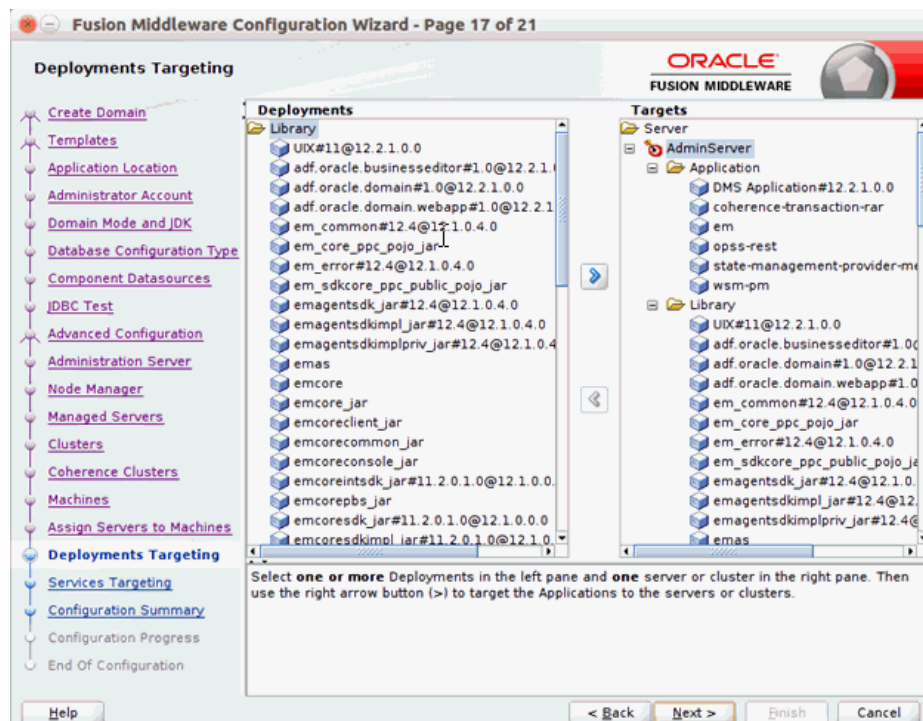


15. Click **Next**. The Assign Servers to Machines window displays. Add the Admin Server and the managed server to the computer.

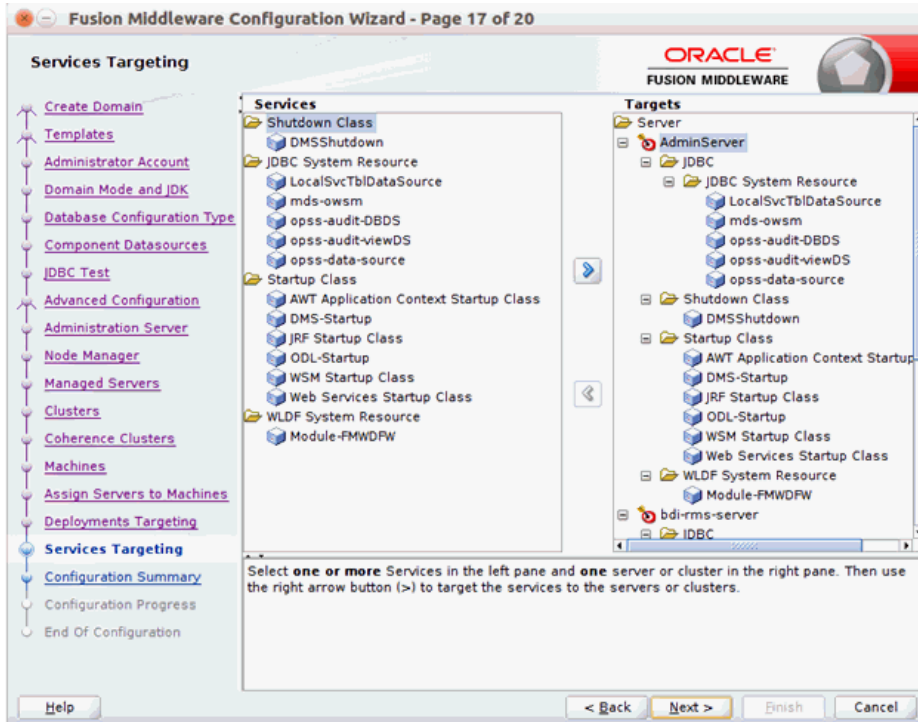




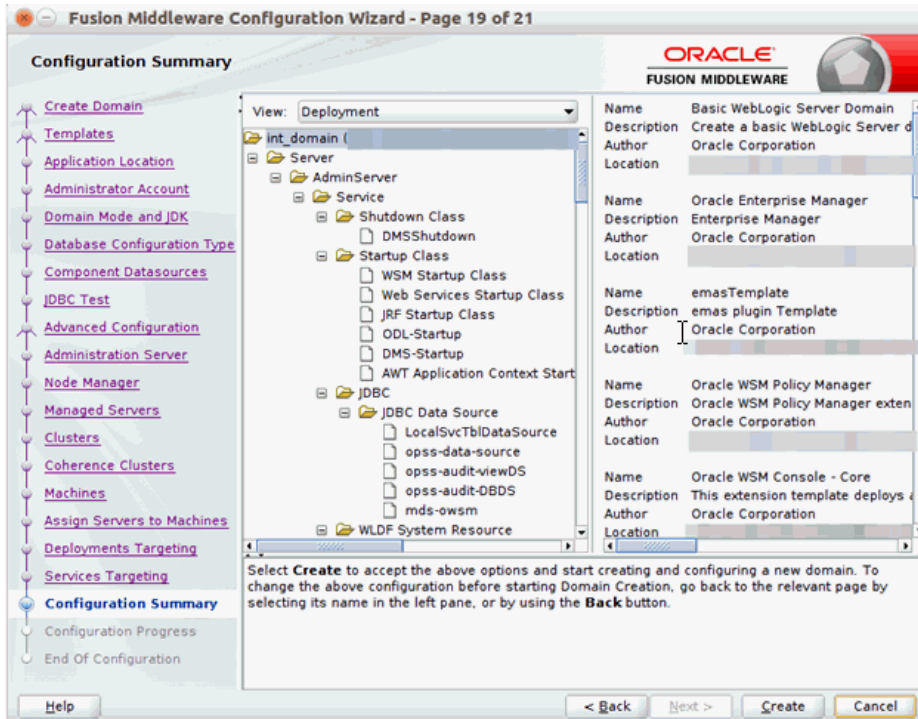
16. Click **Next**. The Deployments Targeting window displays. Select `wsm-pm` from Deployments and add it to `Admin Server` in Targets.



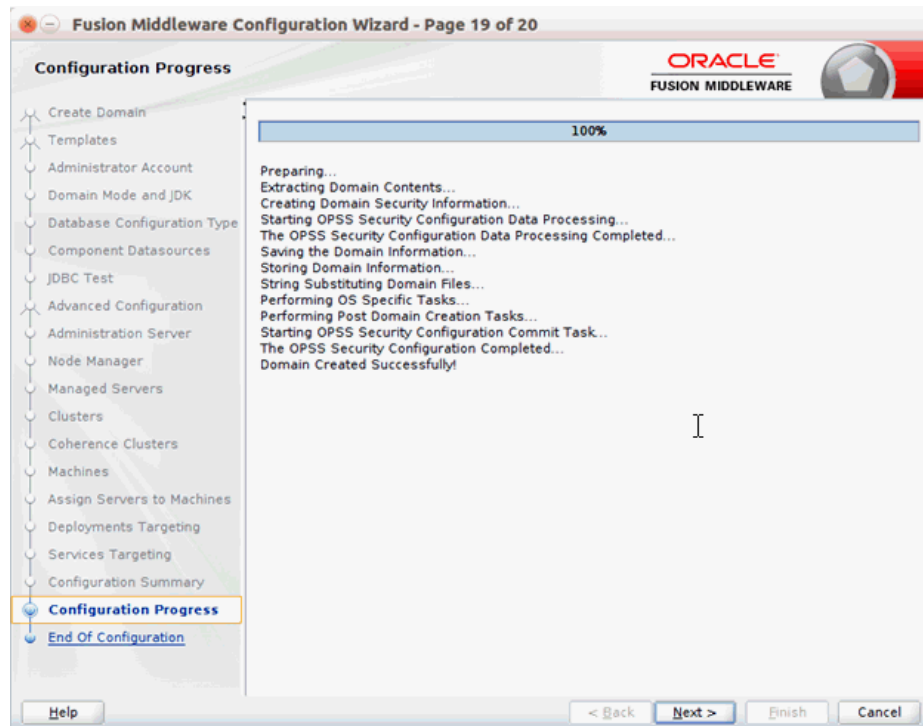
17. Click **Next**. The Services Targeting window displays.



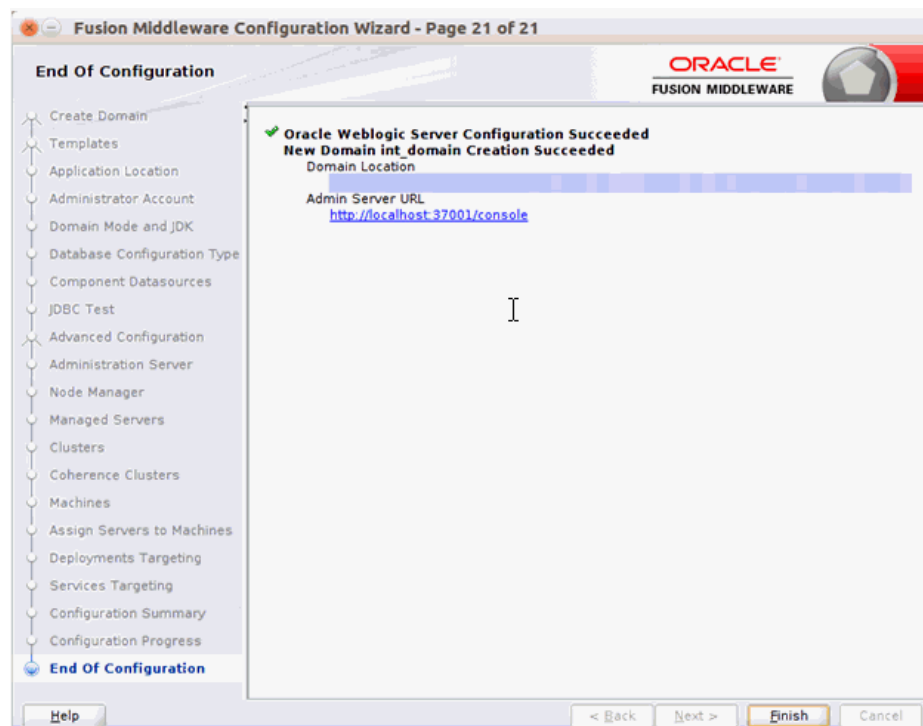
18. Click **Next**. The Configuration Summary window displays. Verify that all information described in this window is accurate.



19. Click **Create**. The Configuration Progress window displays a message when the domain is created successfully.



20. Click **Next**. The Configuration Success window displays that describes the Domain Location and Admin Server URL once the configuration is complete.

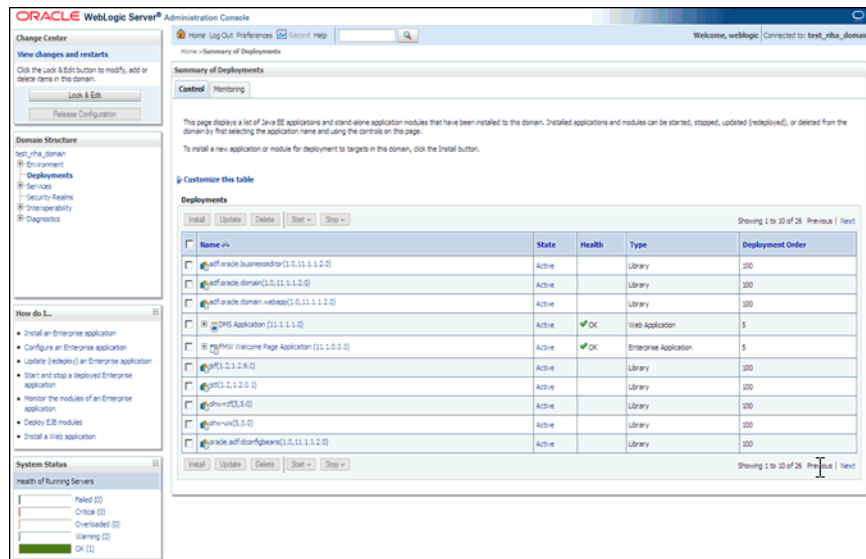


21. Click **Finish** to complete creating the WebLogic domain and managed servers.

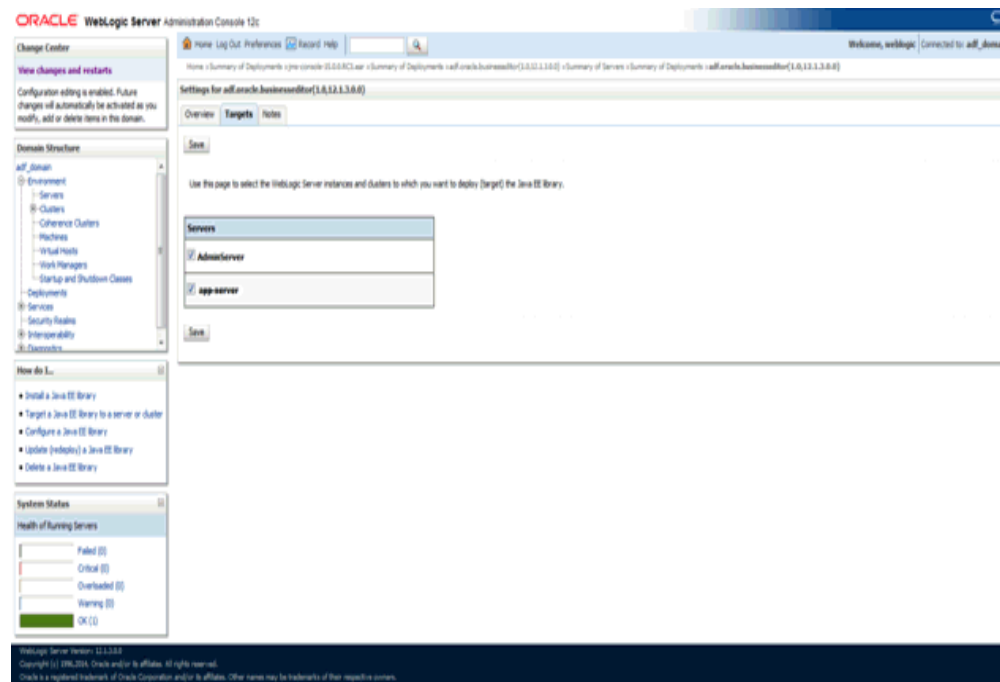
## Verify Installation of ADF Runtime Libraries

This section describes the steps to verify the installation of ADF runtime libraries.

1. Start the Admin Server in the WebLogic domain and log on to the WebLogic Server Administration console with the admin credentials.



2. In the Domain Structure section, click **Deployments**. The deployed libraries are listed.
3. Click on an ADF library and go to the Targets tab. Verify that the library is targeted to both the Admin Server and the managed server. Verify these details for all the ADF libraries.

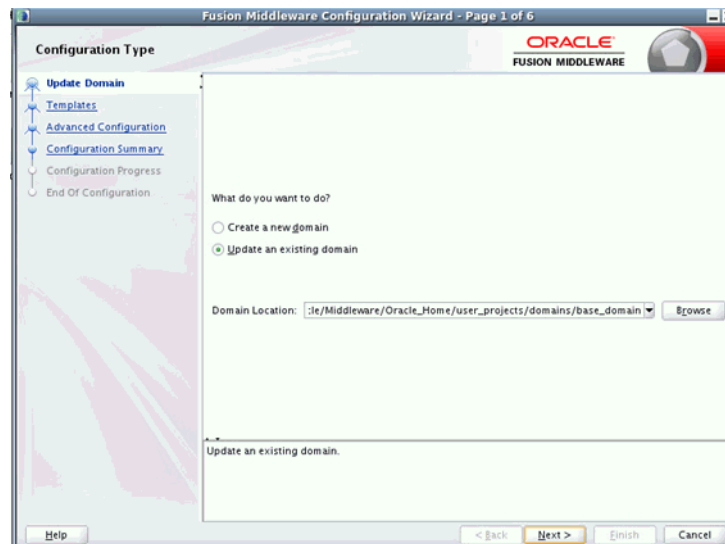


4. Click the **Targets** tab and verify that the created server is selected for that library.

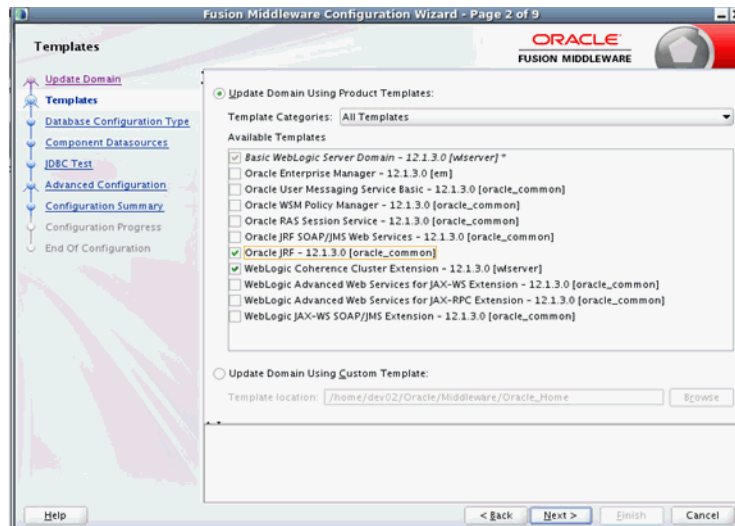
## Extending an Existing Domain to Add ADF Run-time Libraries

This section describes the steps to extend an existing domain to add ADF runtime libraries.

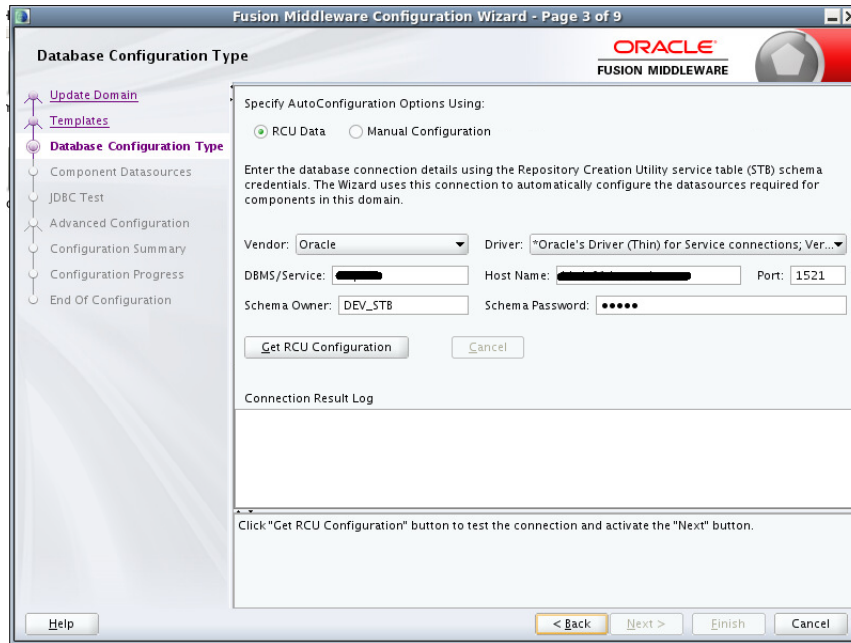
1. Run `config.sh` from the `Oracle_home/oracle_common/common/bin` folder. The Configuration Type window displays.



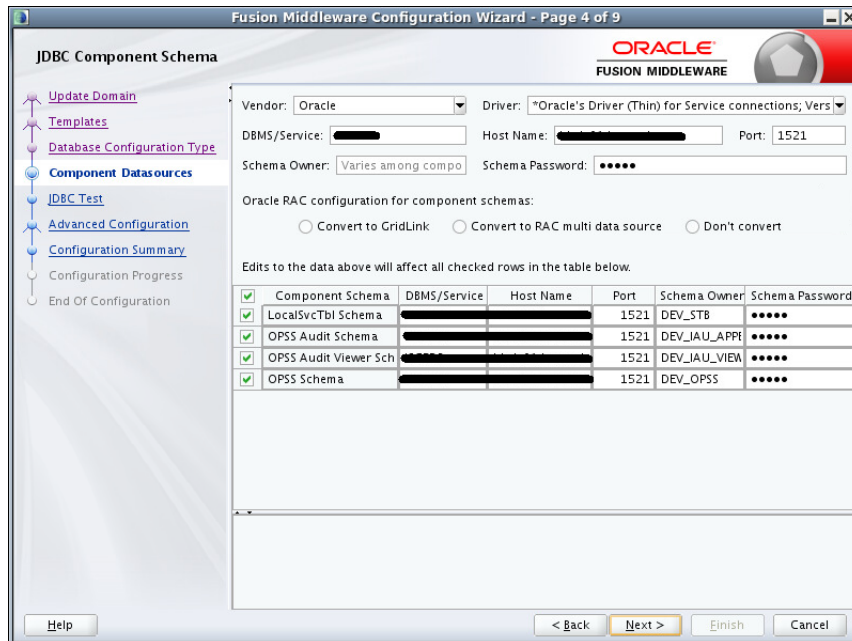
2. Select the Upgrade an existing domain option. Click Browse and choose the location of the domain to be updated with the ADF libraries.



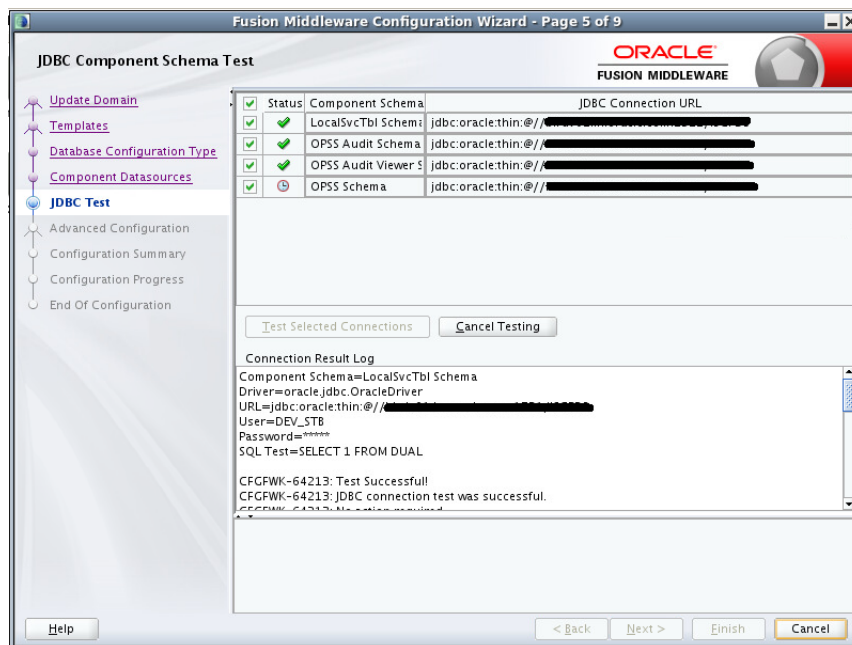
3. Click **Next**. The Templates window displays. Select the Oracle JRF - 12.2.1.0 [oracle\_common] and WebLogic Coherence Cluster Extension - 12.2.1.0 [wserver] checkboxes.



4. Click **Next**. The JDBC Component Schema Test window displays which indicates the status of the schema tests.
  - a. Select the RCU Data radio button.
  - b. Select Oracle as the Vendor.
  - c. Select Oracle's Driver (Thin) for Service connections; Version 9.0.1 and later as the Driver.
  - d. Enter the Service, Host Name, Port, Schema Owner, and Schema Password for the \*\_STB schema created using the RCU.
  - e. Click Get RCU Configuration. The Connection Result Log displays the connection status.



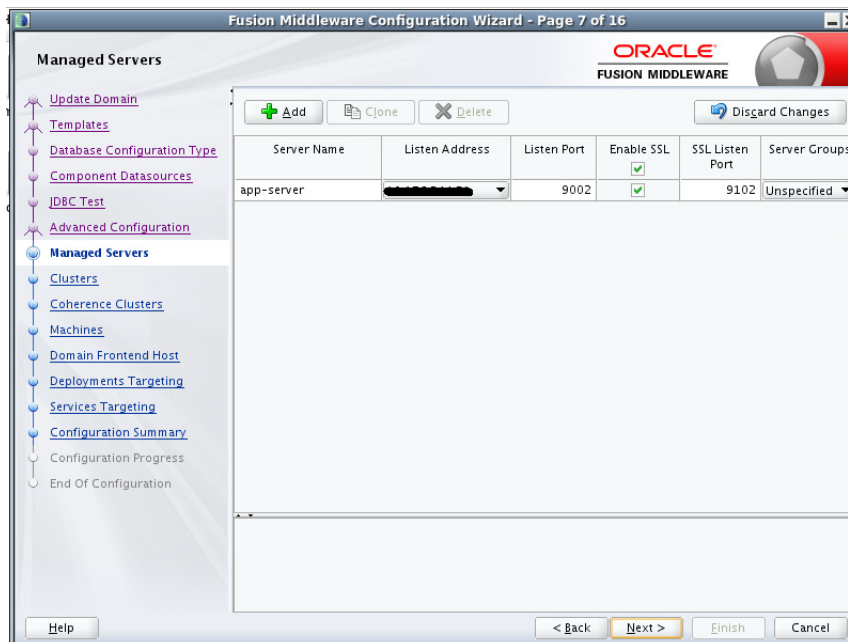
5. Click **Next**. The JDBC Component Schema window displays.



6. Click **Next**. The JDBC Component Schema Test window displays which indicates the status of the schema tests.

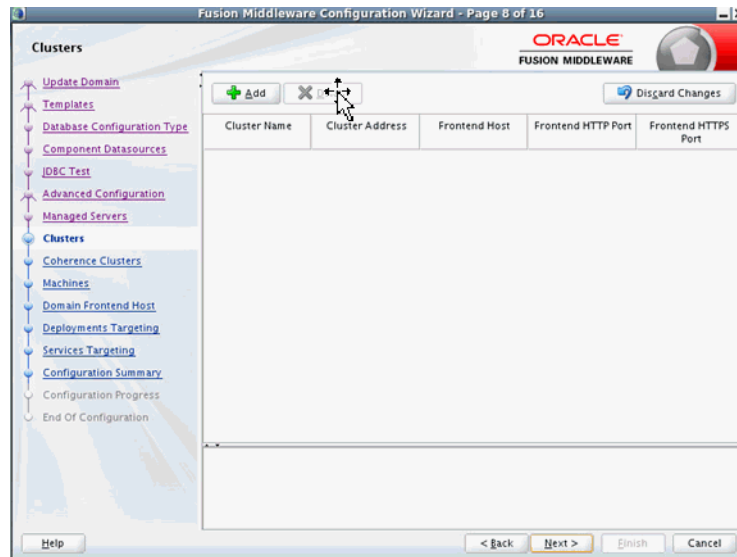


7. Click **Next**. The Advanced Configuration window displays. Select the Managed Servers, Clusters and Coherence, Domain Front end Host Capture and the Deployments and Services check boxes.

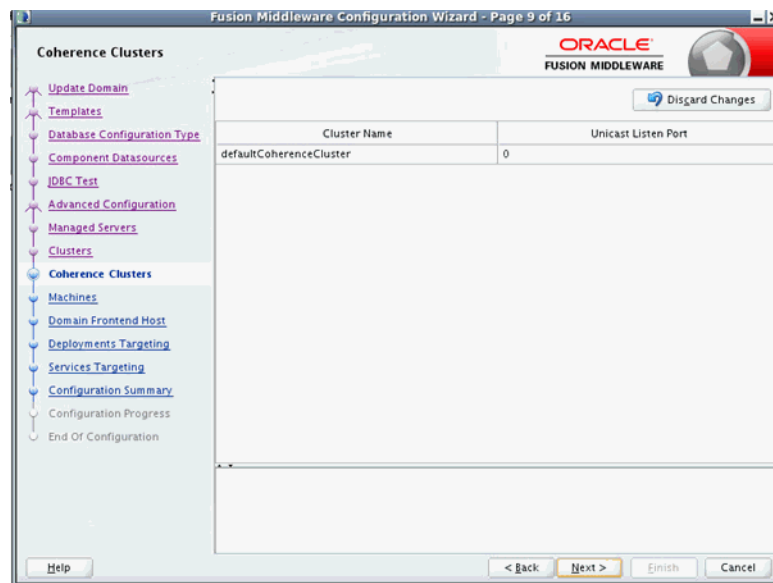


8. Click **Next**. The Managed Servers window displays.
  - a. Click **Add** to add a managed server.
  - b. Enter the Server Name, Listen Address, and the Listen Port for the managed server.

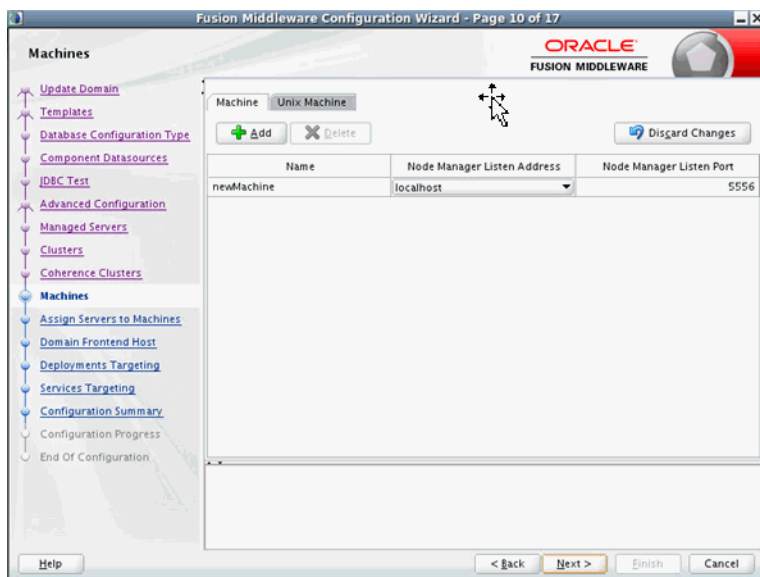




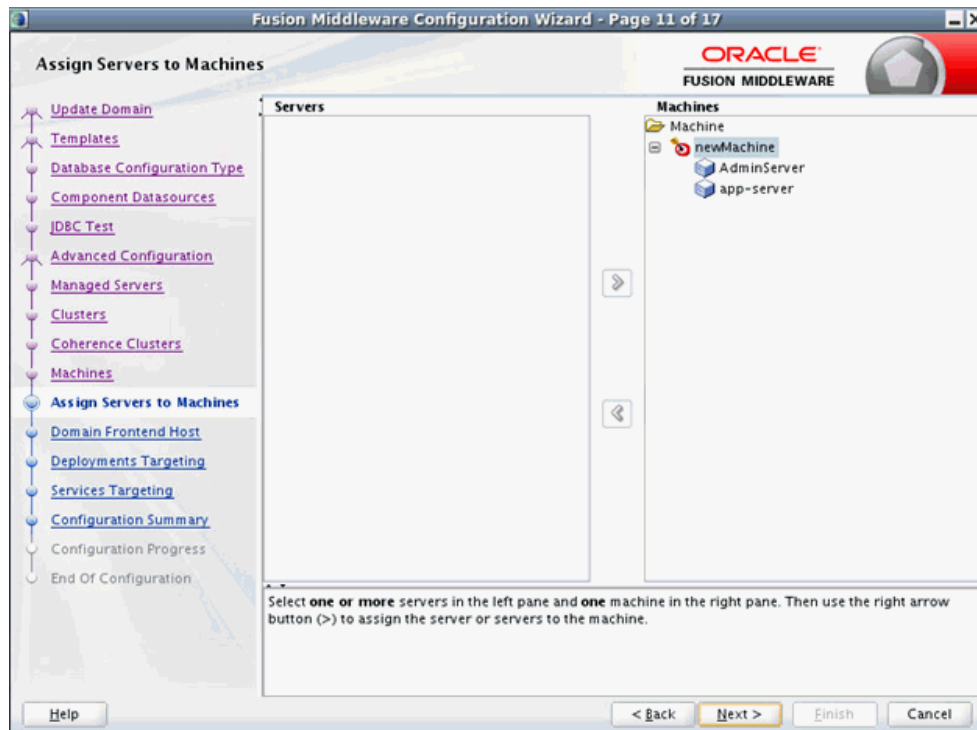
- Click **Next**. The Clusters window displays. Click **Add** to add a cluster. This is an optional step in the procedure.



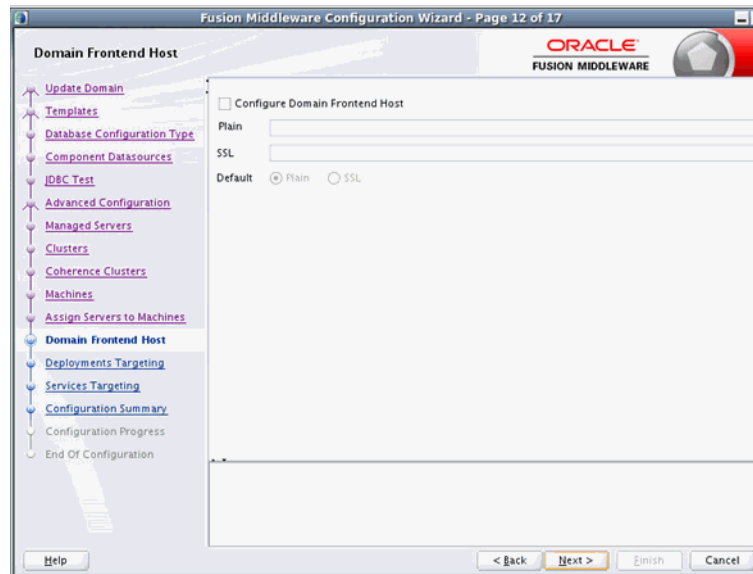
- Click **Next**. The Coherence Clusters window displays. Add a coherence cluster. This is an optional step in the procedure.



11. Click **Next**. The Machines window displays.
  - a. Click Add to add a computer.
  - b. Enter the Name and the Node Manager Listen Address.

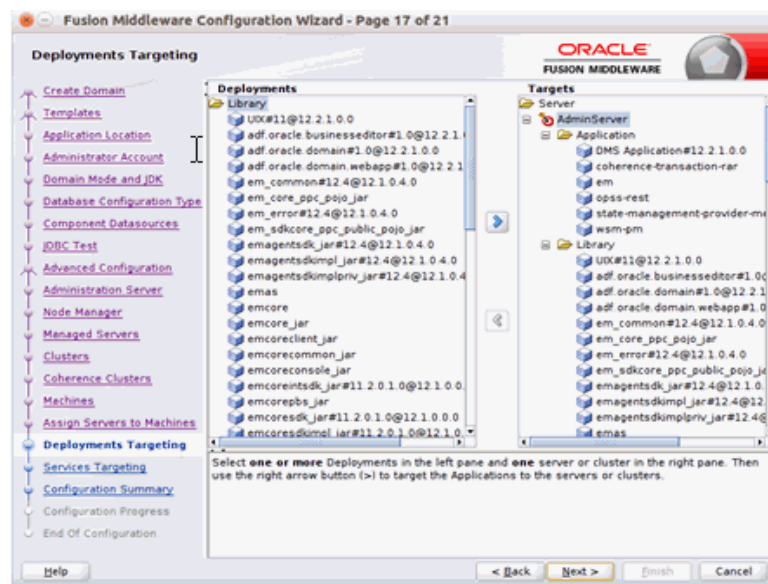


12. Click **Next**. The Assign Servers to Machines window displays. Add both the Admin Server and the managed server to the computer.

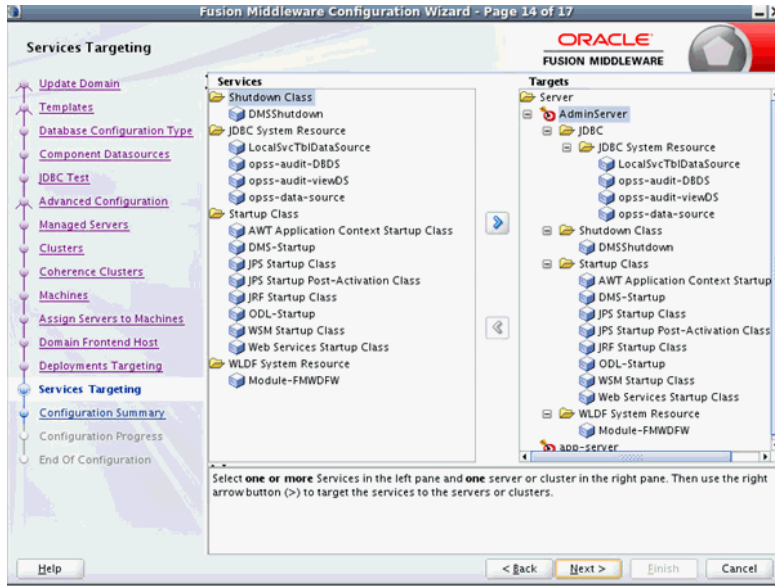


13. Click Next. The Deployments Targeting window displays.

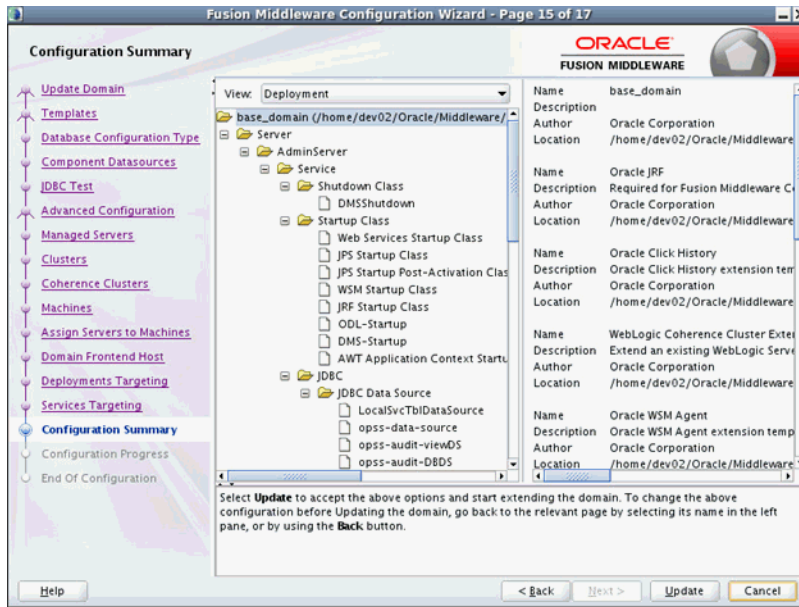
Select wsm-pm from Deployments and add it to Admin Server in Targets.



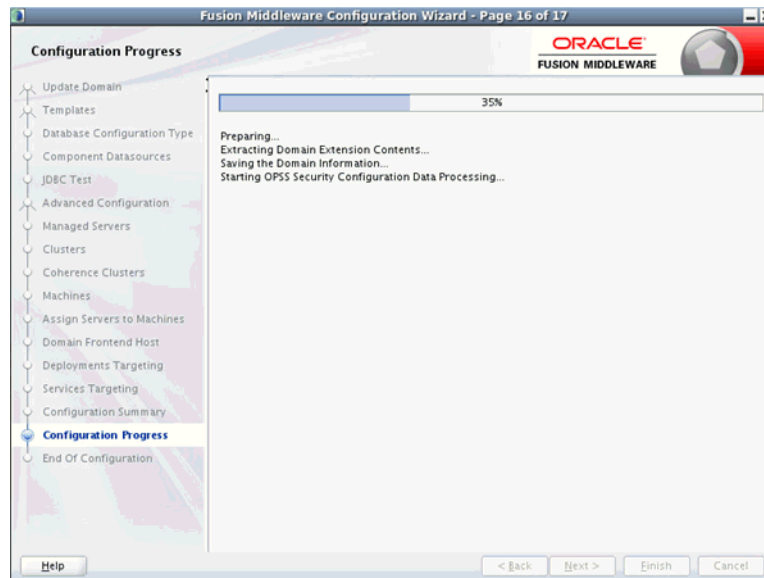
14. Click Next. The Services Targeting window displays.



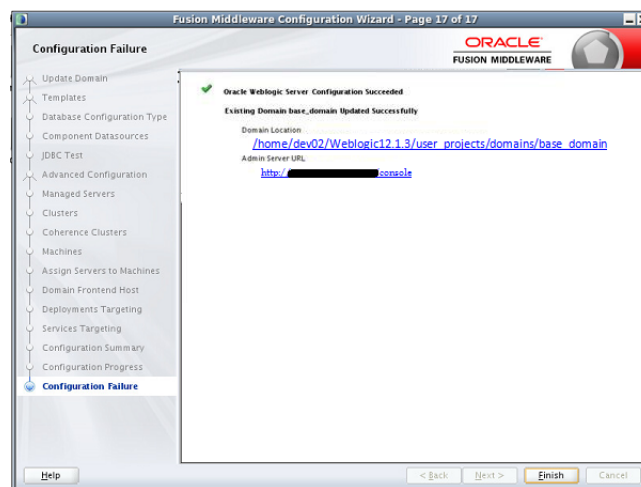
- a. By default, all services are only targeted to the Admin Server.
  - b. Target all the services to the managed server.
15. Click **Next**. The Configuration Summary window displays. Verify that all information described in this window is accurate.



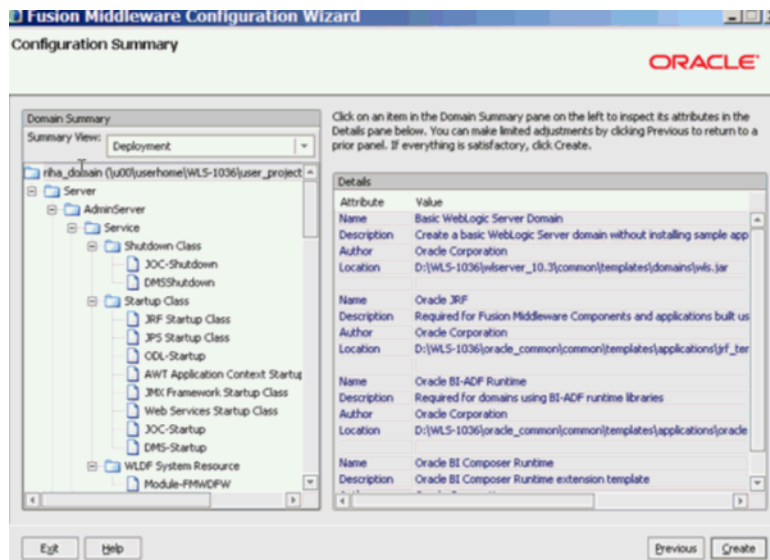
16. Click **Update**. The Configuration Progress window displays. The window displays a status message when the domain is updated successfully.



17. Click **Next**. The Configuration Success window displays that describes the Domain Location and Admin Server URL once the configuration is complete.



18. Click **Finish** to complete updating the existing domain with the ADF runtime.



## Deploying RIHA ear File from RIB-HOME

This section describes the steps to deploy RIHA ear from rib-home. Single RIHA ear file is used for all the rib-apps and deployment is supported only from rib-home.

To deploy RIHA app from rib-home:

1. Download RibHospitalAdministration-Web-16.0.0 for all 1.6.x.xApps\_eng\_ga.tar and extract it to RIB\_INSTALL/rib-home/tools-home.
2. Go to the location rib-home/tools-home/riha/conf
3. Edit the riha-deployment-env-info.properties with riha-admin-server-connection-url value

Ex: riha-admin-server-connection-url=t3://host:port to the location rib-home/tools-home/riha/conf

- a. Edit target server name where RIHA app should be deployed.

Ex: riha-wls-target-name=AdminServer

This means riha app will deploys to AdminServer.

Ex: riha-wls-target-name=m1

This means riha app will deploys to Managed Server 'm1'.

- b. Edit cluster name where RIHA app should be deployed.

If no cluster is configured then enter cluster name as "no\_cluster"

Ex:riha-wls-cluster-name=no\_cluster

If any cluster is configured then enter the name of the cluster.

Ex:riha-wls-cluster-name=New\_Cluster\_1

4. Compile the riha-app. Security credentials get configured while compiling with the following command:

```
tools-home/riha/bin: ./riha-app-compiler.sh -setup-security-credential
```

```

MINGW32:/d/wrk_it15/rib-home/tools-home/riha/bin
PRAHLAD@PRAHLAD /d/wrk_it15/rib-home/tools-home/riha/bin
$ sh riha-app-compiler.sh -setup-security-credential
Starting RIHA compilation ..
JAVA_HOME:: D:\java\jdk1.7

Enter weblogic User Name of t3://localhost:7001 :: weblogic
Loading log4j.xml from file:/D:/wrk_it15/rib-home/log4j.xml

Enter password:
Verify password:
Enter user name of riha app::rihauser
Loading log4j.xml from file:/D:/wrk_it15/rib-home/log4j.xml

Enter password:
Verify password:
Executing
apps-in-scope=sim,rms,Done
Updating riha ear with apps in scope values
[jar] Updating jar: d:\wrk_it15\rib-home\tools-home\riha\riha-app.ear
[delete] Deleting: d:\wrk_it15\rib-home\tools-home\riha\bin\riha.config

#####
### riha-app.ear Updated successfully... ###
#####

PRAHLAD@PRAHLAD /d/wrk_it15/rib-home/tools-home/riha/bin

```

5. Prepare Weblogic for RIHA deployment: by executing this step all the datasource required by RIHA application will be created based on the number of applications in scope of rib-deployment-info.xml and user information required for riha app to login will be created (RihaAdminGroup and user entered in riha compilation phase) tools-home/riha/bin: ./riha-app-deployer.sh -prepare-wls.
6. Deploy RIHA app by executing tools-home/riha/bin: ./riha-app-deployer.sh -deploy-riha-app.
7. Restart the WebLogic managed server.
8. If needed you can undeploy RIHA by executing tools-home/riha/bin: ./riha-app-deployer.sh -undeploy-riha-app.
9. Restrict access to the riha folder with a command like:
 

```

cd rib-home/tools-home/riha
chmod -R 700 .

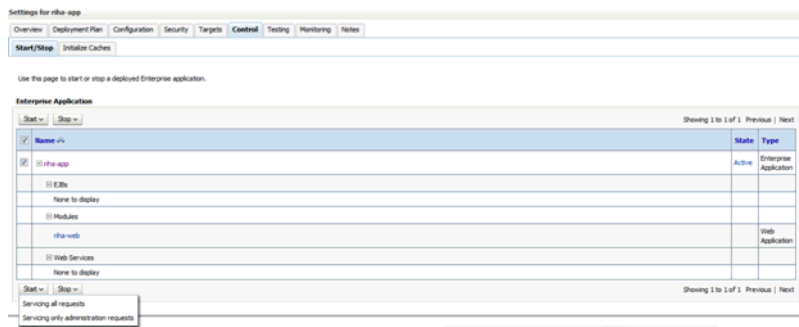
```

## Testing the Deployment

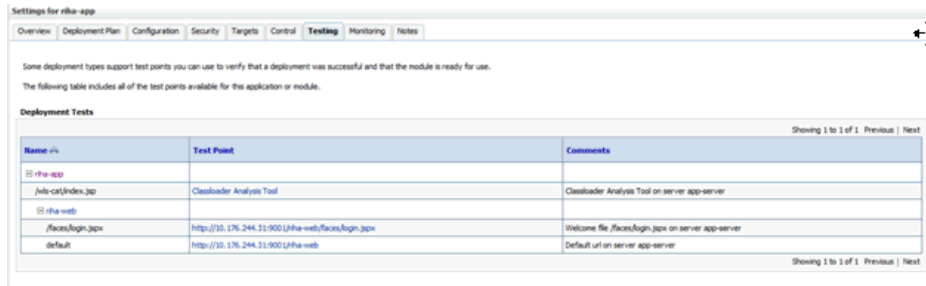
This section describes the steps to test the deployment.

Navigate to the post deployment screen.

1. Click the **Control** tab.



2. Select the application. Click **Start**
3. Click **Yes**.
  - The deployed tool is started successfully.



4. Click on the Testing tab and expand the deployed tool to access the URL of the tool.



---

---

## Navigation and Help

This chapter describes the navigation steps in the Oracle Retail Integration Bus Hospital Administration or RIB Hospital Administration (RIHA) application.

### Log in to RIHA

This procedure explains how to log in to the application.

1. Enter the application URL `http://<host>:<port>/riha-web` in the address bar of the browser.

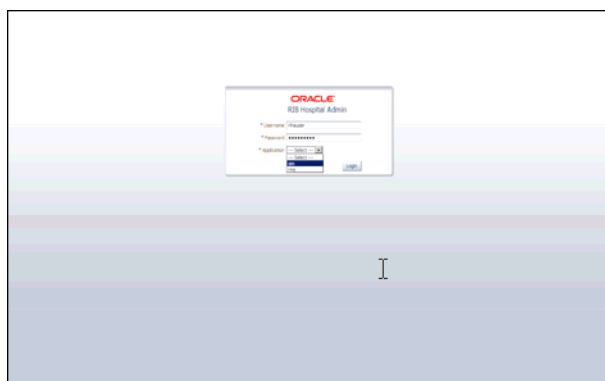
---

---

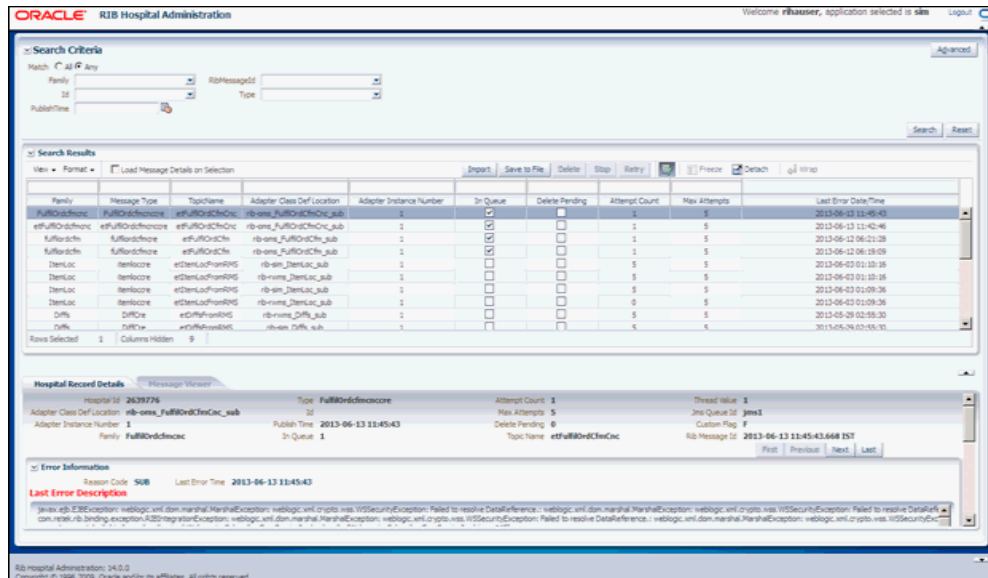
**Note:** Using Mozilla Firefox Web browser is recommended.

---

---



2. In the User Name field, enter the user name configured at the time of installation of the application.
3. In the Password field, enter the password.
4. Select the application name from the drop down to go the error hospital details of a particular application.
5. Click **Login**. The application home page appears.



## Search for a Hospital Record

This procedure explains how to search for a hospital record in RIHA.

### Basic Search

By default, the basic search option is enabled. Basic search is done using the Equal to operator against the given search values.

Click **Reset** to clear the data from search fields.

To perform a Basic Search:

1. Log in to the application.



2. In the Search Criteria section, enter or select the criteria to limit your search in one or more of the following fields:

- Family
- ID
- Publish Time
- RIB Message ID
- Message Type

**Note:** Select **All** to match all fields in the search. Select **Any** to match any field in the search criteria.

3. Click **Search**. The hospital records that match the search criteria are populated in the search results table.

Family	Message Type	TopicName	Adapter Class Def Location	Adapter Instance Number	In Queue	Delete Pending	Attempt Count	Max Attempts	Last Error DateTime
DSORRecept	DSORRECEPTORE	eDSORRecept	rb-ems_DSORRecept_sub	1	<input type="checkbox"/>	<input type="checkbox"/>	5	5	2013-07-04 04:28:45
DSORRecept	DSORRECEPTORE	eDSORRecept	rb-ems_DSORRecept_sub	1	<input type="checkbox"/>	<input type="checkbox"/>	5	5	2013-06-21 02:24:47
DSORRecept	DSORRECEPTMOO	eDSORRecept	rb-ems_DSORRecept_sub	1	<input type="checkbox"/>	<input type="checkbox"/>	5	5	2013-06-21 02:10:54
DSORRecept	DSORRECEPTORE	eDSORRecept	rb-ems_DSORRecept_sub	1	<input type="checkbox"/>	<input type="checkbox"/>	5	5	2013-06-21 01:13:43
DSORRecept	DSORRECEPTORE	eDSORRecept	rb-ems_DSORRecept_sub	1	<input type="checkbox"/>	<input type="checkbox"/>	5	5	2013-06-18 03:27:33
FullRdOrchonc	FullRdOrchonc	eFullRdOrchonc	rb-ems_FullRdOrchonc_sub	1	<input type="checkbox"/>	<input type="checkbox"/>	1	5	2013-06-13 11:45:43
eFullRdOrchonc	eFullRdOrchonc	eFullRdOrchonc	rb-ems_FullRdOrchonc_sub	1	<input type="checkbox"/>	<input type="checkbox"/>	1	5	2013-06-13 11:42:46
FullRdOrchm	FullRdOrchonc	eFullRdOrchm	rb-ems_FullRdOrchm_sub	1	<input type="checkbox"/>	<input type="checkbox"/>	1	5	2013-06-12 06:21:28
FullRdOrchm	FullRdOrchonc	eFullRdOrchm	rb-ems_FullRdOrchm_sub	1	<input type="checkbox"/>	<input type="checkbox"/>	1	5	2013-06-12 06:19:09
Item.or	Item.or	eItem.or	rb-ems_Item.or_sub	1	<input type="checkbox"/>	<input type="checkbox"/>	5	5	2013-06-01 01:10:16

## Advanced Search

By default, the basic search option is selected in the application. In the search panel, click **Advanced** to switch to advanced search option. Advanced search allows you to add more search fields to the search criteria. Click Add Fields to add more fields.

In the advanced search, the operators of each search field can be changed to other available options.

Click **Basic** to switch back to the basic search option.

Click **Reset** to clear the data from search fields.

To perform an Advanced Search:

1. Log in to the application.
2. Click **Advanced** in the search panel.

Search Criteria

Match:  All  Any

Family: Equals [ ] RbMessageId: Equals [ ]

Id: Equals [ ] Type: Equals [ ]

PublishTime: On or after [ ]

Buttons: Search, Reset, Add Fields

3. Click **Add Fields**. Additional fields are listed. Select the required fields to add to the search criteria.
  - Click the red cross mark icon besides the field to remove the field from the search criteria.
4. Enter values in the respective fields and click **Search**. The hospital records that match the search criteria are populated in the search results table.

## Delete a Message

This procedure explains how to mark a message for deletion from the RIB Hospital.

1. Log in to the application.
2. Search for hospital records.
3. Select a row that represents a hospital record.
4. Click **Delete**. The message is deleted when the hospital retry adapters and/or process checks for messages to be deleted from the RIB Hospital.

---

---

**Note:** A message that is in queue (as indicated when the check box in the In Queue column is selected) cannot be deleted.

---

---

## Stop a Message

This procedure explains how to stop a retry adapter and/or a process from attempting to retry a message.

1. Log in to the application.
2. Search for a message.
3. Select a row that represents a hospital record.
4. Click **Stop**. The retry adapter and/or a process does not attempt to reprocess the message until you select the message for Retry.

---

---

**Note:** A message that is in queue (as indicated when the check box in the In Queue column is selected) cannot be stopped.

---

---

## Retry a Message

This procedure explains how to retry a message after you have stopped the retry adapter and/or process from re-processing it.

1. Log in to the application.
2. Search for a message.
3. Select a row that represents a hospital record.
4. Click **Retry**.

---

---

**Note:** A message that is in queue (as indicated by the check box in the In Queue column is selected) or pending deletion (as indicated by the check box in the Delete Pending column is selected) cannot be retried.

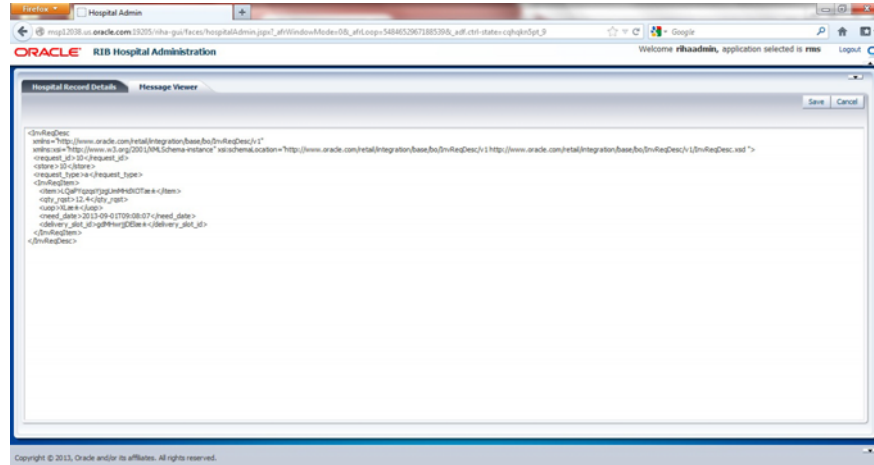
---

---

## View and Edit a Message

This procedure explains how to view a message.

1. Log in to the application.
2. Search for hospital records.
3. Click the **Load Message Details on Selection** check box located in the search results table.
4. Select a row to view the payload of hospital records.
5. Click the **Message Viewer** tab. The message viewer displays the payload in text mode.



6. You can edit the message shown and click **Save** to save the message.

## Save a Message Locally

This procedure explains how to save a message locally.

1. Search for a message and select a row.
2. Click **Save To File**. The message is saved to a RibMessage.xml, a text file named by default.

## Import a New Hospital Record to Hospital Tables

This procedure explains how to retrieve a message from a local location.

1. Click Import.
2. Search for a message and select a row.
  - A popup browser opens with an option to browse for a hospital entry to be loaded.

The message must be in the following specified format.

```

<HospitalEntry>
<AdapterClassLocation>AdapterClassLocation</AdapterClassLocation>
<Family>Family</Family>
<Type>Type</Type>
<TopicName>TopicName</TopicName>
<CustomFlag>F</CustomFlag>
<CustomData> <![CDATA[ CustomData ]]> </CustomData>
<ReasonCode>ReasonCode</ReasonCode>
<RibMessagePayloadView>
<RibMessagePayload>
<MessageData> <![CDATA[ <Message Xml> ]]> </MessageData>
</RibMessagePayload>
</RibMessagePayloadView>
<RibMessageRoutingInfoView>
<RibMessageRoutingInfo>
<SeqNumber>0</SeqNumber>
<Name>Name</Name>
<Value>Value</Value>
<DetailName>DetailName</DetailName>
<DetailValue>DetailValue</DetailValue>
    
```

```

</RibMessageRoutingInfo>
</RibMessageRoutingInfoView>
</HospitalEntry>

```

## Update an Existing Hospital Record

This procedure explains how to update an existing hospital record location.

1. Search for a message and select a row (see [View and Edit a Message](#)).
2. Save the hospital entry locally (See [Save a Message Locally](#)).
3. Edit the hospital entry file.
  - Do not edit or remove any of the <MessageNum> attributes.
4. Click **Import**.
  - A popup browser window opens with an option to browse for the edited hospital entry to be loaded.

The message must be in the same format in which it was saved.

Format the hospital entry to be updated.

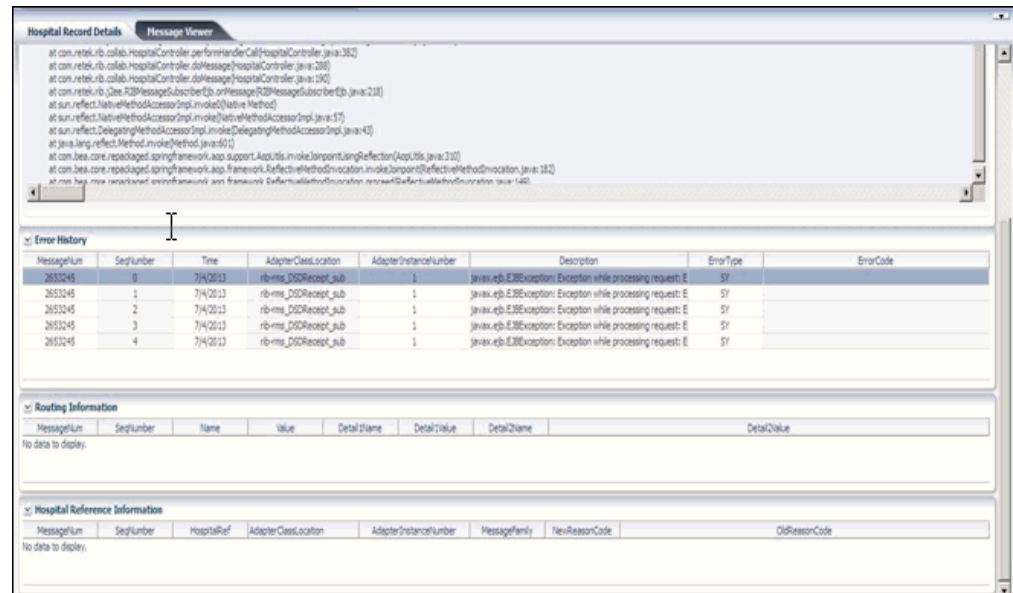
```

<HospitalEntry>
  <MessageNum>12345</MessageNum>
  <AdapterClassLocation>AdapterClassLocation</AdapterClassLocation>
  <Family>Family</Family>
  <Type>Type</Type>
  <RibMessageId>RibMessageId</RibMessageId>
  <Id>Id</Id>
  <PublishTime>YYYY-MM-DD HH:MM:SS</PublishTime>
  <TopicName>TopicName</TopicName>
  <ThreadValue>Threadvalue</ThreadValue>
  <JmsQueueId>jmsId</JmsQueueId>
  <CustomFlag>F</CustomFlag>
  <CustomData>  <![CDATA[ CustomData  ]]>  </CustomData>
  <ReasonCode>ReasonCode</ReasonCode>
  <RibMessagePayloadView>
    <RibMessagePayload>
      <MessageNum>12345</MessageNum>
      <MessageData> <![CDATA[ <Message Xml> ]]>  </MessageData>
    </RibMessagePayload>
  </RibMessagePayloadView>
  <RibMessageRoutingInfoView>
    <RibMessageRoutingInfo>
      <SeqNumber>0</SeqNumber>
      <Name>Name</Name>
      <Value>Value</Value>
      <Detail1Name>DetailName</Detail1Name>
      <Detail1Value>DetailValue</Detail1Value>
    </RibMessageRoutingInfo>
  </RibMessageRoutingInfoView>
</HospitalEntry>

```

## View Hospital Record Details

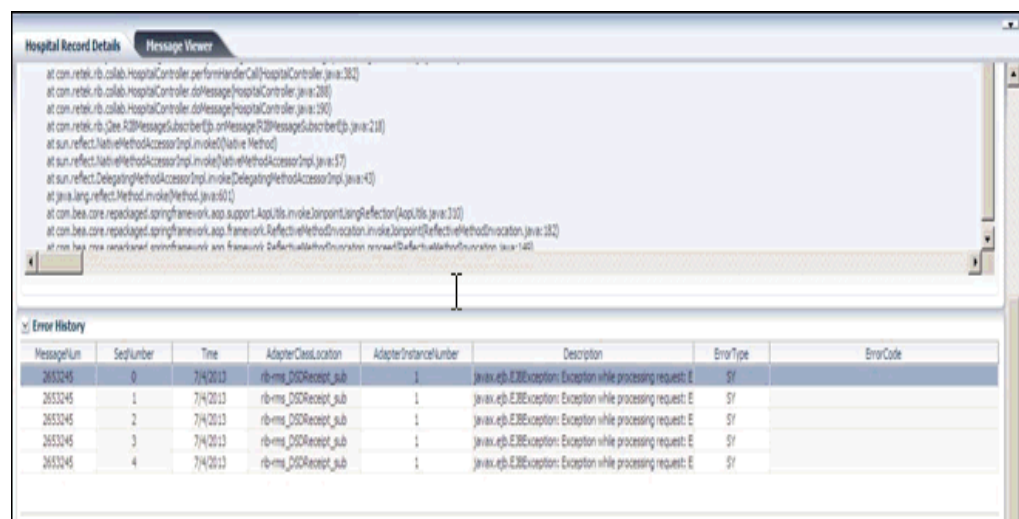
This procedure explains how to see detailed information about a hospital record.



1. Search for a message (see "View and Edit a Message").
2. Select a row that represents a hospital record.
  - By default, the Hospital Records Detail tab is active and displays the selected row's hospital record details.
  - The size of the pane can be adjusted by using the arrow mark located in the right side of the pane.

## View the Error History of a Message

This procedure explains how to view a message's error history.



1. Search for a message (see "View and Edit a Message").
2. Select a row that represents a hospital record.
  - By default the Hospital Records Details tab is active and displays hospital record details for the selected row.

- Click on the arrow located near the error history. This will expand the pane and display errors associated with each of the possible retry attempts.

## View the Hospital Reference Information of a Message

This procedure explains how to view a message's hospital reference information.

**Note:** This pane contains data that applies only to retailers who have access to the custom code.

This pane displays records that are already in the RIB\_MESSAGE table but are prevented from being retried until another record has been successfully retried. Once the other record has been successfully retried, the Reason Code in the RIB\_MESSAGE table for the record being referenced in the Hospital Reference column is set to the new Reason Code to make it available for retry. View the hospital record details for a message (see [View Hospital Record Details](#)).

The screenshot shows the 'Hospital Record Details' pane with the following sections:

- Stack Trace:** A list of Java stack frames including classes like `com.retail.rib.collab.HospitalController`, `sun.reflect.NativeMethodAccessorImpl`, and `org.springframework.aop.support.AopUtils`.
- Error History:** A table with columns: MessageId, SeqNumber, Time, AdapterClassLocation, AdapterInstanceNumber, Description, ErrorType, and ErrorCode. It shows five entries for MessageId 2653245, all with ErrorType 'SY' and Description 'javax.ejb.EJBException: Exception while processing request: E'.
- Routing Information:** A table with columns: MessageId, SeqNumber, Name, Value, DetailName, DetailValue, Detail2Name, and Detail2Value. It displays 'No data to display'.
- Hospital Reference Information:** A table with columns: MessageId, SeqNumber, HospitalRef, AdapterClassLocation, AdapterInstanceNumber, MessageFamily, NewReasonCode, and OldReasonCode. It displays 'No data to display'.

- Search for a message (see [View and Edit a Message](#)).
- Select a row that represents a hospital record.
  - By default the Hospital Records Details tab is active and displays hospital record details of the selected row.
  - Click on the arrow located near the hospital reference information. This will expand the pane and display associated reference information.



## View the Routing Information of a Message

**Hospital Record Details** **Message Viewer**

```

at com.netel.rib.colab.HospitalController.performHandlerCall(HospitalController.java:382)
at com.netel.rib.colab.HospitalController.doMessage(HospitalController.java:288)
at com.netel.rib.colab.HospitalController.doMessage(HospitalController.java:290)
at com.netel.rib.Colab.RibMessageSubscriber$P.onMessage(RibMessageSubscriber$P.java:218)
at sun.reflect.NativeMethodAccessorImpl.invoke(NativeMethod)
at sun.reflect.NativeMethodAccessorImpl.invoke(NativeMethodAccessorImpl.java:57)
at sun.reflect.DelegatingMethodAccessorImpl.invoke(DelegatingMethodAccessorImpl.java:43)
at java.lang.reflect.Method.invoke(Method.java:605)
at com.bea.core.repackaged.springframework.aop.support.AopUtils.invokeJoinpointUsingReflection(AopUtils.java:310)
at com.bea.core.repackaged.springframework.aop.framework.ReflectiveMethodInvocation.invokeJoinpoint(ReflectiveMethodInvocation.java:282)
at com.bea.core.repackaged.springframework.aop.framework.ReflectiveMethodInvocation.proceed(ReflectiveMethodInvocation.java:148)

```

**Error History**

MessageLun	SeqLunber	Time	Adapter-ClassLocation	AdapterInstanceLunber	Description	ErrorType	ErrorCode
2653245	0	7/4/2013	rib-ms_DSORReceipt_sub	1	java.io.IOException: Exception while processing request: E	SY	
2653245	1	7/4/2013	rib-ms_DSORReceipt_sub	1	java.io.IOException: Exception while processing request: E	SY	
2653245	2	7/4/2013	rib-ms_DSORReceipt_sub	1	java.io.IOException: Exception while processing request: E	SY	
2653245	3	7/4/2013	rib-ms_DSORReceipt_sub	1	java.io.IOException: Exception while processing request: E	SY	
2653245	4	7/4/2013	rib-ms_DSORReceipt_sub	1	java.io.IOException: Exception while processing request: E	SY	

**Routing Information**

MessageLun	SeqLunber	Name	Value	Detail1Name	Detail1Value	Detail2Name	Detail2Value
No data to display.							

**Hospital Reference Information**

MessageLun	SeqLunber	HospitalRef	Adapter-ClassLocation	AdapterInstanceLunber	MessageFamily	MsgResourCode	OldResourCode
No data to display.							

This procedure explains how to view a message's routing information.

1. Search for a message (see [View and Edit a Message](#)).
2. Select a row that represents a hospital record.
  - By default the Hospital Records Details tab is active and displays hospital record details of the selected row.
  - Click on the arrow located near the routing information. This will expand the pane and display associated reference information.



# Glossary

Term	Definition
Attempt Count	The number of times the system has tried to process the message.
adapter	An adapter represents one or more threads of control within the adapter that publishes or subscribes to the applicable XML messages.
Custom Flag	This value is used to signal that the message contains custom data. This is not currently used by the RIB; therefore its value is always set to F (false).
Delete Pending	A Yes means that the message is marked for deletion and will be removed from the RIB Hospital when the retry adapter and/or process checks for messages to be deleted from the RIB Hospital. No means that the message is not pending for deletion.
Family	The valid message family to which the message belongs. Each message family contains information specific to a related set of operations on a business entity or related business entities.
Hospital ID	This is the identifier of a single message in the Hospital database. It is the primary key that associates the message in the RIB_MESSAGE table with its corresponding data in the RIB_MESSAGE_FAILURE, RIB_MESSAGE_ROUTING_INFO and RIB_MESSAGE_HOSPITAL_REF tables.
ID	Optional ID string that identifies the message. Composite primary keys require multiple IDs. For example, a line item within a Purchase Order may contain the PO number and line item number as part of the ID. For example: <id>PONumber=12345</id> <id>ItemID=321</id>
In Queue	If Yes, messages in the queue are waiting to be reprocessed. If No, messages are not being reprocessed.
JMS Queue ID	This ID represents the JMS server that the message is published to during retries from the hospital. The ID also represents the JMS server from which the message was originally published (or from which the message was originally attempted to be published). The format of this field is <JMS host name>:<JMS host port>.
Last Error Description	The text of the error message that describes why the message failed to process.
Location	The adapter name and/or process name.
Max Attempts	The maximum number of times a message in the RIB Hospital should be re-processed by an application.

<b>Term</b>	<b>Definition</b>
Message Type	Each message family contains a set of sub-formats specific to the business event triggering message publication. The term message type embodies this specific sub-format. For example: a Purchase Order message family can contain message types such as Create PO Header, Create PO Detail, Update PO Header, or Delete PO Detail.
Publish Time	The date/timestamp indicating when the message was published.
Reason Code	This value identifies whether an error occurred during publication of the message or during consumption (subscription). The indicators are JMS, SUB, and PUB. The PUB reason code is used by RMS to indicate that a reference to a message must be retained in the RIB Hospital. When retried, the adapter must call a special stored procedure (PUB_RETRY) that will publish the message once some specific conditions are met in the RMS application.
RIB Message ID	ID of the Message within the RIB Hospital. This value is set only after the message is checked into the RIB Hospital.
Thread Value	The thread value is used for parallel processing of messages within the same family. This value is added to the message during publication to the JMS so that it can be routed through a specific adapter and/or process.